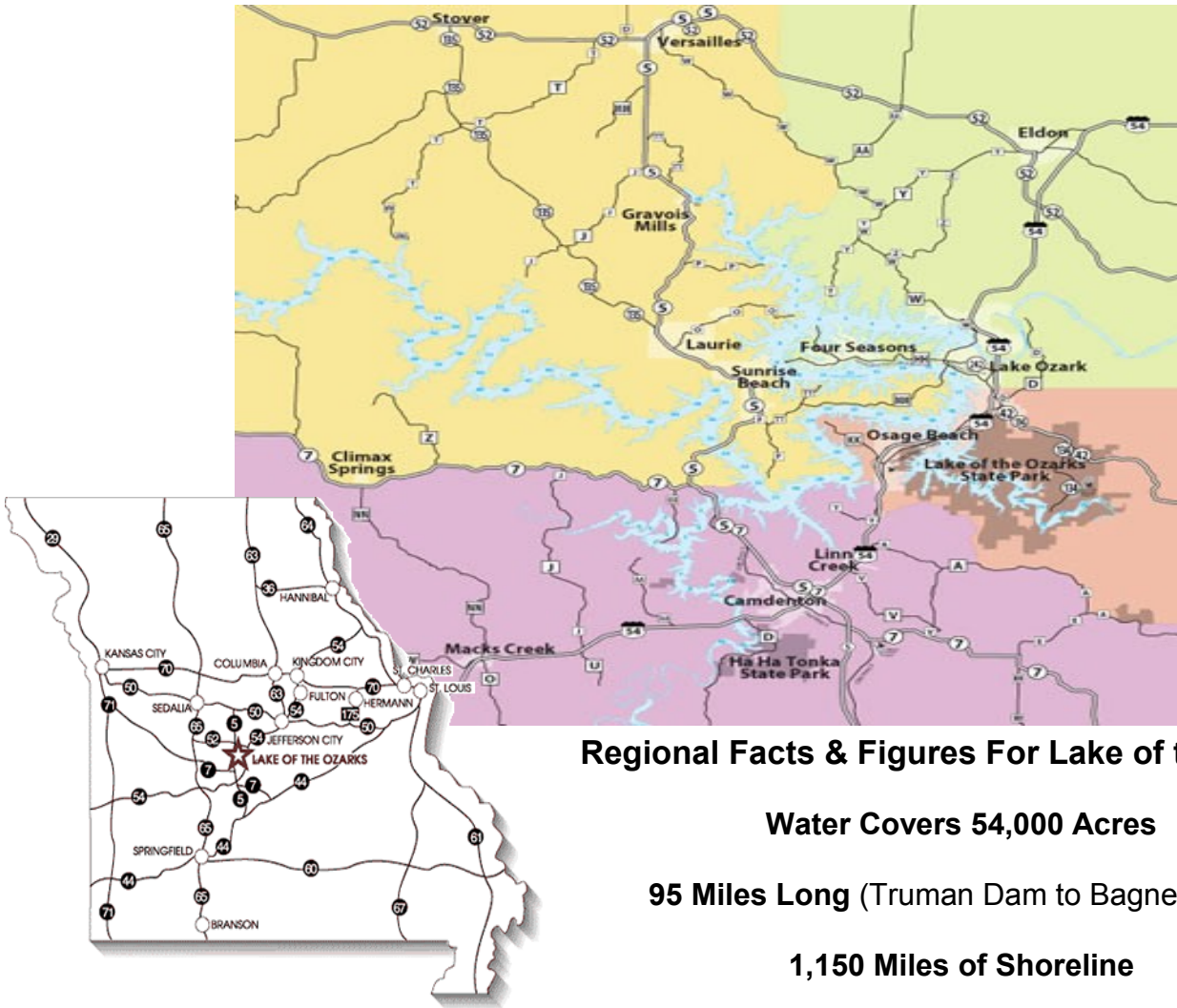


Central Missouri's Lake of the Ozarks Demographic Profile 2015



Regional Facts & Figures For Lake of the Ozarks

Water Covers 54,000 Acres

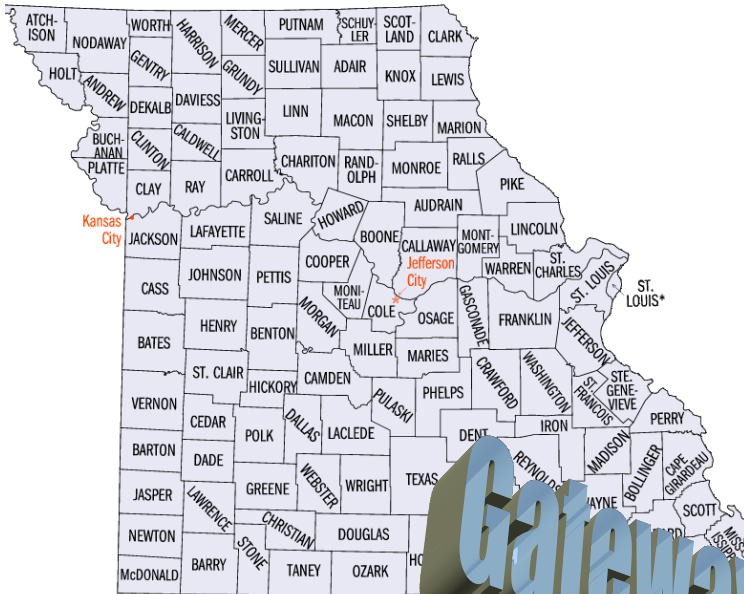
95 Miles Long (Truman Dam to Bagnell Dam)

1,150 Miles of Shoreline



Lake of the Ozarks
Regional Economic Development Council
Quality Life. Quality Business.

Missouri Facts & Figures



Facts

State Population 6,063,589

18th Largest State in population

115 Counties

Figures

Land Area (sq. mi.)

Total 69,704.31

Land 68,885.93

Water 818.39

Median Family Income (2013) \$58,626

Per Capita Personal Income (2014) \$41,613

Unemployment Rate (Feb 2015) 7.6%

Cost of Living (2014) 17th Lowest in the Nation

Tax Rate (2014) 4.225%

Gas Tax Rate (2014) State 17.3%, Federal 18.4% = 35.7%/gallon

Gross State Product (2013) \$276 Billion (22th largest State GDP)

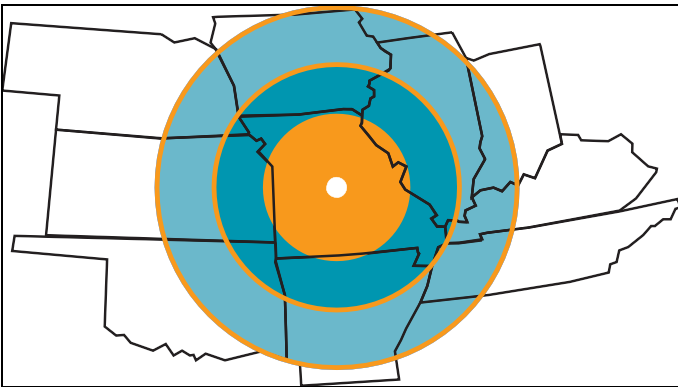
Gateway to the West



Missouri Facts & Figures

The Lake of the Ozarks Region

Lake of the Ozarks has experienced tremendous growth and development over the last 20 years and now boasts a population of more than 124,886 permanent residents and a thriving tourism industry. The popularity of the Lake of the Ozarks region is accentuated by its central location in Missouri, and that it is equal distance from the state's largest population centers of St. Louis and Kansas City. Because of the unique ability to build at the water's edge and the availability of diverse activities, the Lake Area is projected to experience continued growth and development.



St. Louis	165 Miles	Kansas City	198 Miles
Springfield	100 Miles	Branson	133 Miles
Chicago	463 Miles	Omaha	386 Miles
Tulsa	278 Miles	Wichita	286 Miles
OK City	481 Miles	Little Rock	307 Miles
Des Moines	325 Miles	Memphis	298 Miles

Within a 165-mile radius, Lake of the Ozarks is a short driving distance to nearly all of Missouri, in addition to portions of Arkansas, Kansas, Illinois and Iowa.

State Parks

The beauty of our region can be experienced at our State Parks. Lake of the Ozarks offers visitors the opportunity to visit the great outdoors with two state parks within our region:

Ha Ha Tonka State Park
1491 State Road D
Camdenton, MO 65020

Lake of the Ozarks State Park
403 Hwy 134
Kaiser, MO 65047

Pa He Tsi Park (part of LOTO State Park)
Nichols Road
Osage Beach, MO 65065

State Parks as well as other Lake Area recreational activities increase the opportunities to improve the quality of life for all Lake Area residents and visitors.



MISSOURI
DEPARTMENT OF
NATURAL RESOURCES

*Missouri State Parks - a division of the
Missouri Department of Natural Resources*

Population Data

County Population/Projections					
	2000	2010	2020 (est)	2030 (est)	% Change '10-'30
Camden	37,051	44,002	46,290	49,124	12%
Miller	23,564	24,748	27,277	28,404	15%
Morgan	19,309	20,565	23,357	24,827	21%

Source: <http://oa.mo.gov/bp/projections/TotalPop.pdf>

City Populations & Estimates					
	2010	2013	#	Change	%
Camden County					
Camdenton	3,718	3,811	93		2.5%
Climax Springs	124	120	-4		-3.2%
Linn Creek	244	244	0		0.0%
Osage Beach	4,351*	4,372*	21		0.5%
Stoutland	192	193	1		0.5%
Sunrise Beach	431	426	-5		-1.2%
Village of Four Seasons	2,217	2,216	-1		0.0%

*A portion of Osage Beach's boundaries extend into Miller County

	2010	2013	#	Change	%
Miller County					
Bagnell	93	90	-3		-3.2%
Brumley	91	93	2		2.2%
Eldon	4,567	4644	77		1.7%
Iberia	736	746	10		1.4%
Lake Ozark	1,586	1653	67		4.2%
Olean	128	131	3		2.3%
St. Elizabeth	336	343	7		2.1%
Tuscumbia	203	206	3		1.5%

Population Data

City Population & Estimates				
	2010	2013	Change #	%
Morgan County				
Barnett	203	202	-1	-0.5%
Gravois Mills	144	140	-4	-2.8%
Laurie	945	934	-11	-1.2%
Stover	1,094	1081	-13	-1.2%
Syracuse	172	172	0	0.0%
Versailles	2,482	2446	-36	-1.5%

Source: <http://www.census.gov/popest/data/intercensal/cities/files/SUB-EST00INT.csv>

County Social & Economic Profiles - Population by Age						
	Camden		Miller		Morgan	
Year 2010						
<19	9,264	21%	6,719	27%	5,034	24%
20 - 44	10,510	24%	7,182	29%	4,938	24%
45 - 64	14,694	33%	6,950	28%	6,058	29%
65 - 84	8,813	20%	3,363	14%	4,043	20%
85>	721	2%	534	2%	492	2%

	Camden		Miller		Morgan	
Year 2013						
<19	8,953	20%	6,464	26%	4,800	24%
20 - 44	10,428	24%	7,213	29%	4,866	24%
45 - 64	13,873	32%	7,029	28%	5,822	29%
65 - 84	9,809	22%	3,806	15%	4,251	21%
85>	799	2%	580	2%	526	3%

Source: <http://factfinder2.census.gov/faces/nav/jsf/pages/index.xhtml>

Population Data



County Populations by Race & Ethnicity

	Camden		Miller		Morgan	
	2010	2013	2010	2013	2010	2013
White	42,468	42,521	23,941	24,221	19,770	19,496
Black/African American	179	272	99	163	131	186
American Indian/ Alaska Native	219	251	136	153	135	153
Asian	184	260	70	87	76	101
Native Hawaiian/ Pacific Islander	8	15	36	46	2	3
Hispanic/Latino	1,014	1,125	343	413	365	378

Source: <http://factfinder2.census.gov/faces/nav/jsf/pages/index.xhtml> 2012 Data are based on 3 year estimates 10-12

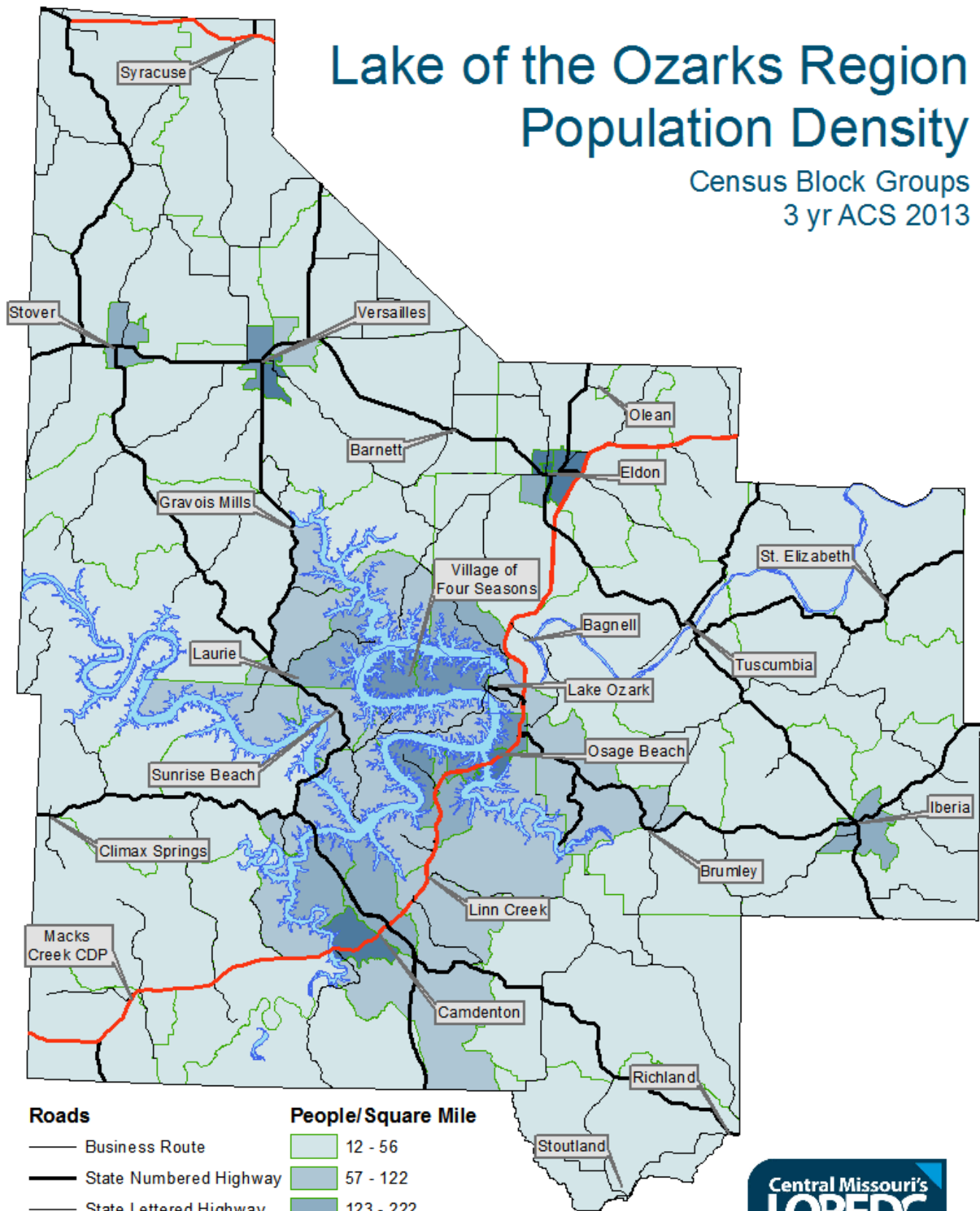
County Populations by Housing

	Camden		Miller		Morgan	
	2010	2013	2010	2013	2010	2013
Total Housing Units	41,183	41,113	12,758	12,702	15,517	15,319
Occupied Housing Units	19,068	17,278	9,917	9,676	8,450	8,018
Owner-Occupied Units	15,276	14,074	7,341	7,545	6,702	6,256
Renter-Occupied Units	3,792	4,026	2,576	2,131	1,748	1,762
Ave. Household Size	2.27	2.51	2.47	2.54	2.40	2.49
Ave. Family Size	2.68	2.97	2.97	3.07	2.91	3.08

Source: <http://factfinder2.census.gov/faces/nav/jsf/pages/index.xhtml> 2013 Data are based on ACS 3-year data

Lake of the Ozarks Region Population Density

Census Block Groups
3 yr ACS 2013



Lake of the Ozarks
Regional Economic Development Council
Quality Life. Quality Business.

Construction Data



County Building Permits 2013

	Camden	Miller	Morgan
Single Family Units	30	9	0*
Two Family Units	16	0	0*
Total Units	46	28^	0*
Construction Costs	\$6,120,220	\$4,876,000	0*

Source: <http://censtats.census.gov/bldg/bldgprmt.shtml>

*Although no County permits were reported, individual communities within counties also grant permits, and are available upon request. Total also includes construction of both three and four family and five or more family buildings and units. For example, Miller County in 2013 has 5 constructed buildings equaling 19 total units for three and four family buildings.



Population and Employment Data

County Populations by Employment Status (2000, 2013 ACS 3 yr.)

	Camden		Miller		Morgan	
	2000	2013	2000	2013	2000	2013
16 years & older	30,460	36,407	18,105	19,587	15,230	16,553
In Labor Force	17,158	20,133	11,565	11,576	8,622	8,094
Employed	16,339	18,386	10,926	10,401	8,202	6,704
Unemployed	790	3,131	618	1,978	414	1,390
Not in Labor Force	13,302	16,274	6,540	8,011	6,608	8,459

Source: <http://factfinder2.census.gov/faces/nav/jsf/pages/index.xhtml> 2012 Data are based on 5 year estimates 08-12

Employment Data

County Unemployment Statistics 2013-2014

Camden	Labor Force	Employment	Unemployment	Rate
January 2014	17,561	15,394	2,167	12.3%
February	17,573	15,313	2,260	12.9%
March	17,855	15,904	1,951	10.9%
April	18,325	16,932	1,393	7.6%
May	19,242	17,908	1,334	6.9%
June	20,122	18,784	1,338	6.6%
July	20,163	18,803	1,360	6.7%
August	19,499	18,182	1,317	6.8%
September	19,324	18,125	1,199	6.2%
October	18,848	17,725	1,123	6%
November	18,601	17,321	1,280	6.9%
December	18,257	16,762	1,495	8.2%
January 2015	17,991	16,160	1,831	10.2%
February	17,911	16,086	1,825	10.2%



Miller	Labor Force	Employment	Unemployment	Rate
January 2014	11,468	10,187	1,281	11.2%
February	11,443	10,068	1,375	12%
March	11,438	10,288	1,150	10.1%
April	11,561	10,697	864	7.5%
May	11,680	10,867	813	7%
June	12,075	11,271	804	6.7%
July	11,670	10,873	797	6.8%
August	11,445	10,708	737	6.4%
September	11,752	11,080	672	5.7%
October	11,700	11,052	648	5.5%
November	11,604	10,876	728	6.3%
December	11,495	10,650	845	7.4%
January 2015	11,645	10,613	1,032	8.9%
February	11,531	10,501	1,030	8.9%

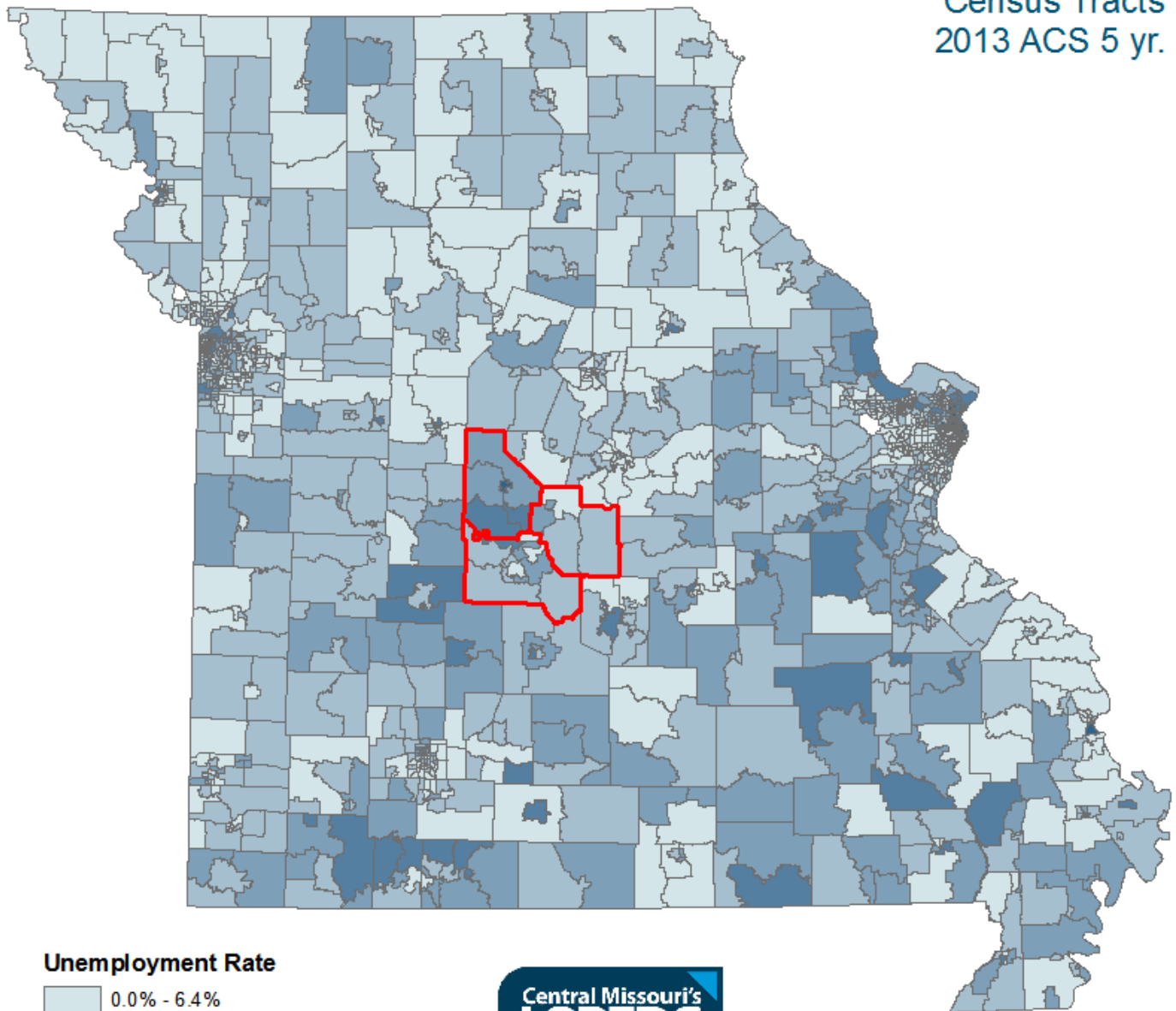
Morgan	Labor Force	Employment	Unemployment	Rate
January 2014	7,932	7,034	898	11.3%
February	7,922	6,932	990	12.5%
March	7,893	7,028	865	11%
April	7,810	7,171	639	8.2%
May	7,986	7,369	617	7.7%
June	8,281	7,638	643	7.8%
July	7,917	7,253	664	8.4%
August	7,854	7,243	611	7.8%
September	7,903	7,351	552	7%
October	8,068	7,554	514	6.4%
November	8,048	7,488	560	7%
December	8,042	7,427	615	7.6%
January 2015	8,131	7,383	748	9.2%
February	8,011	7,260	751	9.4%



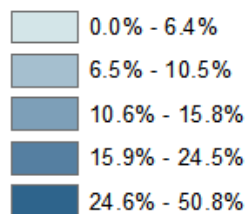
Employment Data

State of Missouri, Unemployment

Census Tracts
2013 ACS 5 yr.

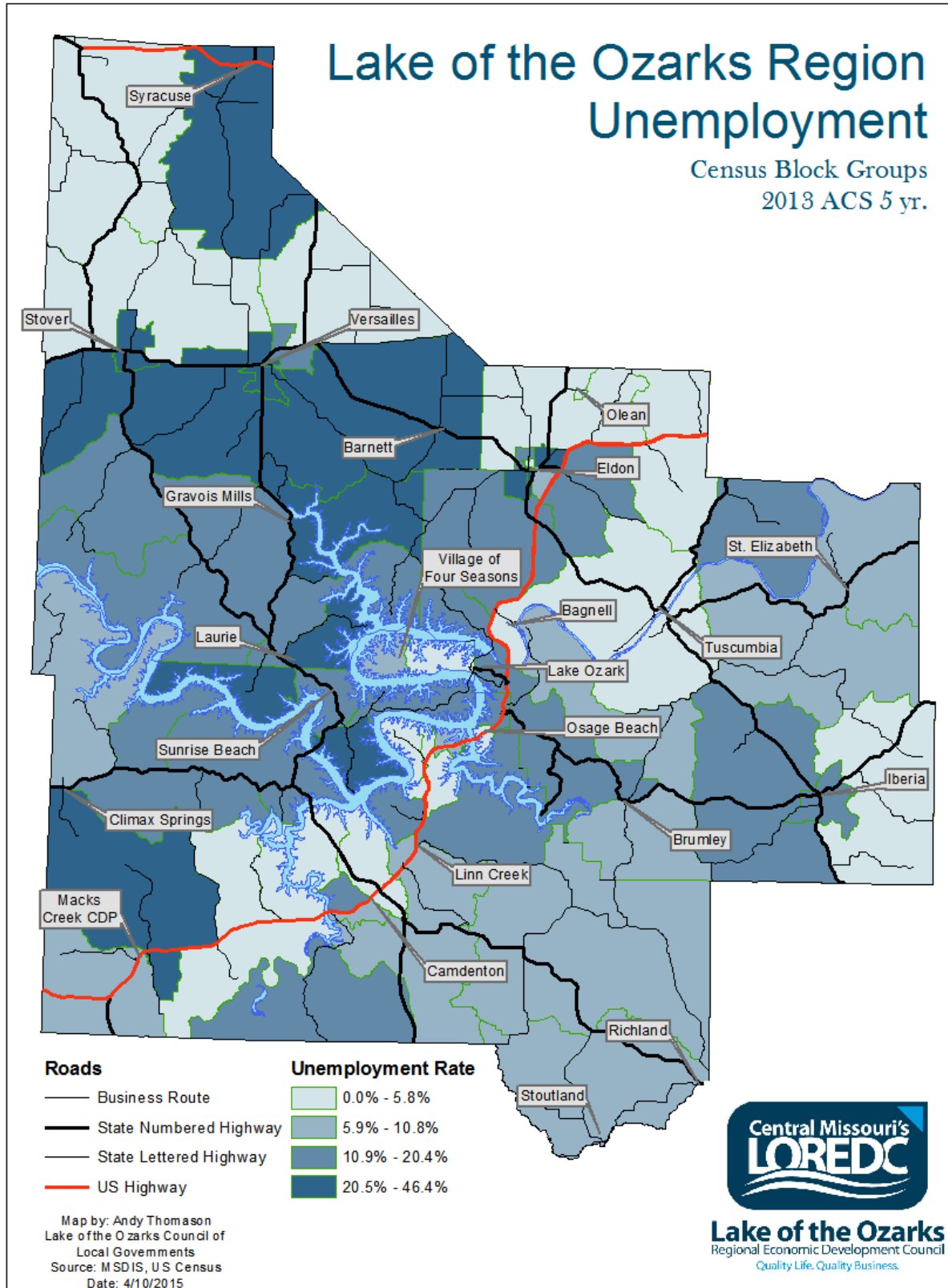


Unemployment Rate



Map by: Andy Thomason
Lake of the Ozarks Council of
Local Governments
Source: M SDIS, U S Census
Date: 4/14/2015

Employment Data



Employment Data

County Average Wages 2013

	2013 Total Wages All Industries, Private Ownership		2013 Total Wages All Industries Public/Private	
	Avg. Annual Wages	Avg. Hourly Wages	Avg. Annual Wages	Avg. Hourly Wages
Camden	\$27,736	\$13.33	\$28,140	\$13.53
Miller	\$30,397	\$14.61	\$30,490	\$14.66
Morgan	\$24,296	\$11.68	\$24,867	\$11.96



Source: <http://www.missourieconomy.org/index.stm>

County Populations by Commute (2000, 2013 ACS 5 yr.)

Mode of Transportation	Camden		Miller		Morgan	
	2000	2013	2000	2013	2000	2013
Car, Truck, Van drove alone	12,294	13,792	8,030	7,706	5,648	4,670
Car, Truck, Van carpoled	2,370	2,209	1,854	1,363	1,401	934
Public Transport	34	83	20	40	23	33
Walked	364	258	213	178	235	217
Other Means	152	310	100	238	80	173
Worked at Home	861	1,080	510	631	694	460

Source: <http://factfinder2.census.gov/faces/nav/jsf/pages/>



Employment Data

County Populations by Occupation (2000, 2013 ACS 5 yr.)

	Camden		Miller		Morgan	
	2000	2013	2000	2013	2000	2013
Management/Professional	4,484	5,748	2,533	2,497	1,888	1,801
Service	2,656	3,862	1,967	2,265	1,326	1,096
Sales/Office	4,787	4,696	2,578	2,729	1,990	1,538
Construction/Extraction/Maintenance	2,233	1,901	1,565	1,440	1,113	1,117
Production/Transportation	2,083	2,175	2,182	1,472	1,723	1,147

Source: <http://factfinder2.census.gov/faces/nav/jsf/pages/index.xhtml>



County Populations by Class of Worker (2000, 2013 ACS 5 yr.)

	Camden		Miller		Morgan	
	2000	2013	2000	2013	2000	2013
Private Wage/Salary	12,278	12,941	7,903	7,082	5,752	4,377
Government	2,076	2,062	1,771	1,581	1,125	1,234
Self-Employed	1,900	2,693	1,199	1,384	1,279	1,059
Unpaid Family Workers	85	86	53	80	46	17

Source: <http://factfinder2.census.gov/faces/nav/jsf/pages/index.xhtml>

Employment Data

County Populations by Industry (2000, 2013 ACS 5yr.)

Industry	Camden		Miller		Morgan	
	2000	2013	2000	2013	2000	2013
Agriculture/Forestry/ Fishing/Hunting	298	214	485	259	564	402
Construction	1,918	1,576	1,253	1,205	933	738
Manufacturing	1,634	1,433	1,441	865	1,438	793
Wholesale Trade	377	254	225	158	202	106
Retail Trade	2,780	2,625	1,297	1,696	1,041	1,014
Transportation/ Warehousing/Utilities	555	659	578	315	335	266
Information	314	361	162	140	124	71
Finance/Insurance/ Real Estate	1,073	1,325	581	434	390	314
Management/ Administrative/ Waste Management	928	1,353	474	691	348	356
Educational/Health/ Social Services	2,776	3,939	1,624	1,937	1,342	1,368
Entertainment/ Recreation/Food	2,145	2,667	1,274	1,238	589	416
Other	677	1,242	601	734	413	455
Public Administration	864	734	931	731	483	400

Source: <http://factfinder2.census.gov/faces/nav/jsf/pages/index.xhtml>



Employment Data

Tri-County Major Regional Employers (* MO's Top 50 Employers 2012)

Penmac



Employer	Product/Service	Location
Ameren Missouri*	Utility	All Counties
Camden County	City/Government	Camden
Camdenton R-III School District	Education	Camden
Camden on the Lake	Resort/Hotel	Camden
Central Bank	Finance/Service	All Counties
Charter Communication	Communication	All Counties
Dollar General *	Retail	All Counties
Gates Rubber Company	Manufacturing	Versailles
Good Shepherd Nursing	Health Care	Morgan
Home Depot *	Retail	Miller
Hy-Vee *	Retail	Camden
Innovative Procurement	Manufacturing	Miller
Johnson Controls	Manufacturing	Miller
Kohls	Retail	Miller
Laclede Electric	Utility	Camden
Lake Regional Health System	Health Care	All Counties
The Lodge of Four Seasons	Resort/Hotel	Camden
Lowe's *	Retail	Miller
Malone Staffing	Employment	All Counties
Manpower Staffing	Employment	All Counties
Menards	Retail	Miller
Miller County	City/Government	Miller
Eldon School District	Education	Miller
Morgan County	City/Government	Morgan
Morgan County School District	Education	Morgan
Opies, Inc.	Transportation	Miller
Paul's Cash Saver	Retail	Camden
Penmac Staffing	Employment	All Counties
Premium Outlets	Retail	Camden
Speedline Technologies	Manufacturing	Camden
Tan-Tar-A Resort	Resort/Hotel	Camden
Target *	Retail	Camden
UPS *	Logistics	All Counties
Walgreens *	Retail	Miller
Walmart *	Retail	All Counties

Income Data



County Populations by Income (2000, 2013 ACS 5 yr.)

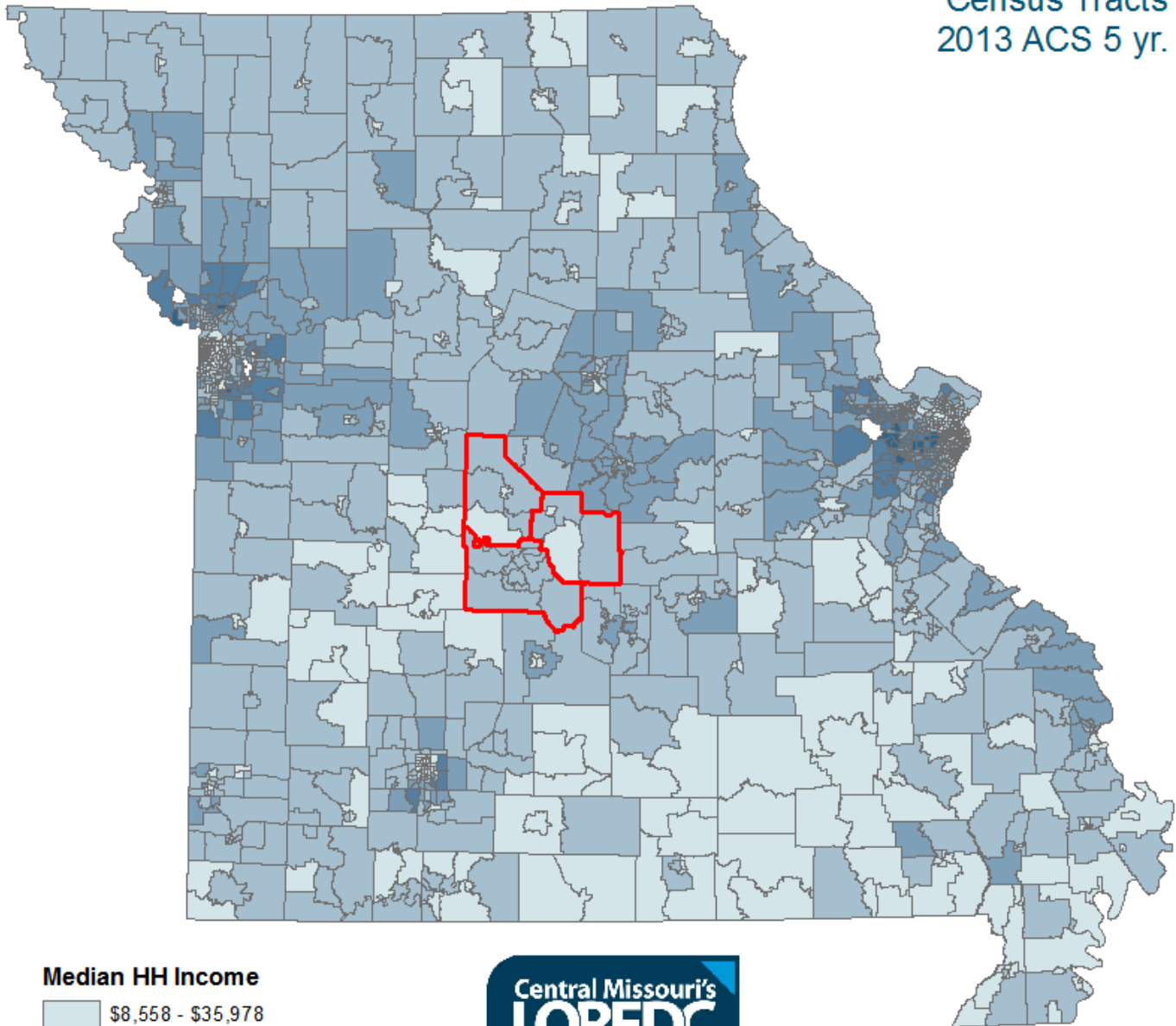
	Camden		Miller		Morgan	
	2000	2013	2000	2013	2000	2013
Total Households	15,740	17,647	9,288	10,034	7,847	8,164
< \$10,000	1,313	1,288	1,046	1,035	912	951
\$10,000-\$14,999	1,216	966	948	844	797	716
\$15,000-\$24,999	2,471	2,362	1,648	1,583	1,446	1,227
\$25,000-\$34,000	2,657	2,353	1,623	1,486	1,376	1,213
\$35,000-\$49,999	3,077	3,265	1,752	1,563	1,368	1,224
\$50,000-\$74,999	2,777	3,532	1,451	1,574	1,194	1,676
\$75,000-\$99,999	1,185	2,019	480	1,065	363	614
\$100,000 - \$149,999	605	1,258	199	643	240	432
\$150,000 - \$199,999	197	304	88	95	77	109
\$200,000>	242	300	53	146	74	2
Median Household Income	\$35,840	\$43,458	\$30,977	35,507	\$30,659	34,797

Source: <http://factfinder2.census.gov/faces/nav/jsf/pages/index.xhtml>

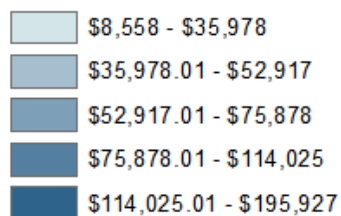
Income Data

State of Missouri, Household Income

Census Tracts
2013 ACS 5 yr.



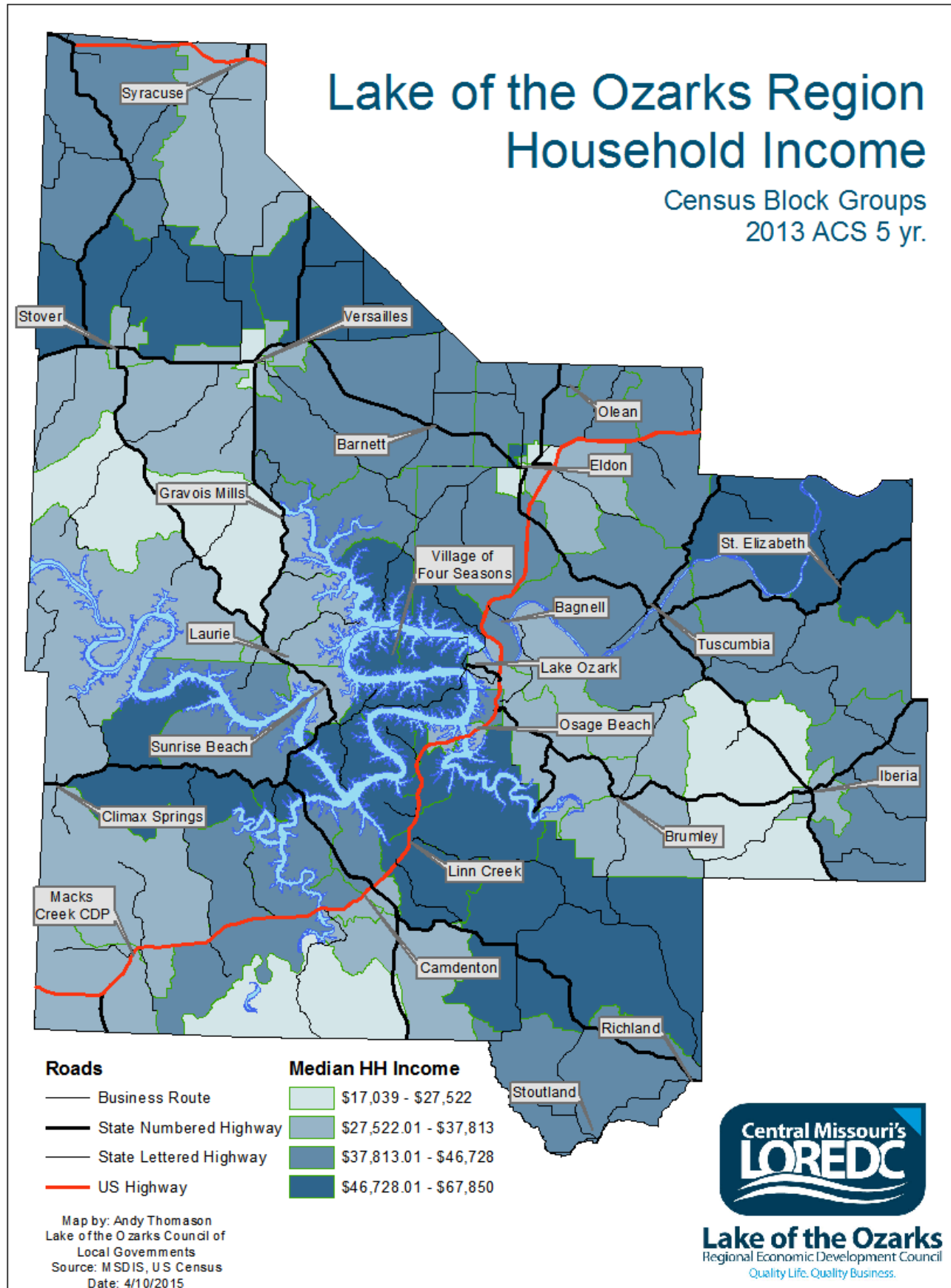
Median HH Income



Lake of the Ozarks
Regional Economic Development Council
Quality Life. Quality Business.

Map by: Andy Thomason
Lake of the Ozarks Council of
Local Governments
Source: M SDIS, U S Census
Date: 4/10/2015

Income Data



Education Data



Photo: Camdenton R-III School District

County Public, Private, College, University Schools 2014

Camden County Schools	Student #	Public	Private	College/ University	Other/ Alternative
Camdenton High	1297	X			
Camdenton Middle	642	X			
Climax Springs Elementary	112	X			
Climax Springs High	123	X			
Dogwood Elementary	715	X			
Green Gables Lodge	10				X
Hawthorn Elementary	496	X			
Hurricane Deck Elementary	144	X			
Juvenile Justice Center	3				X
Lake Career & Technical Center				X	X
Lake West Christian Academy	80				X
Life Christian University	22				X
Macks Creek Elementary	206	X			
Macks Creek High	135	X			
Oak Ridge Intermediate	600	X			
Osage Beach Elementary	208				
Stoutland Elementary	27	X			
Stoutland High	203	X			
State Fair Community				X	
Columbia College				X	
Online College Programs	Multiple			X	

Source: http://www.publicschoolreview.com/county_schools/stateid/MO/county/29141
<http://mcids.dese.mo.gov/guided inquiry/Pages/District-and-School-Information.aspx>

Education Data



Photo : Osage High School

County Public, Private, College, University Schools 2014					
Miller County Schools	Student #	Public	Private	College/ University	Other/ Alternative
Dogwood Hills	21				X
Eldon Career Center				X	
Eldon High	569	X			
Eldon Middle	285	X			
Eldon Montessori	40		X		
Eldon Upper Elementary	425	X			
Iberia Elementary	405	X			
Iberia High	322	X			
Lakeview Christian	22		X		
Miller Co. Elementary	148	X			
Our Lady of the Snows	82		X		
Powerhouse Christian	13		X		
Eldon South Elementary	596	X			
St. Elizabeth Elementary	138	X			
St. Elizabeth High	100	X			
Tuscumbia High	78	X			
Heritage Elementary	422	X			
Osage High School	568	X			
Osage Middle School	445	X			
School of the Osage Upper Elementary	416	X			

Source: http://www.publicschoolreview.com/county_schools/stateid/MO/county/29141
<http://mc.ds.dese.mo.gov/guided inquiry/Pages/District-and-School-Information.aspx>

Education Data



Photo : Morgan County R-II High School

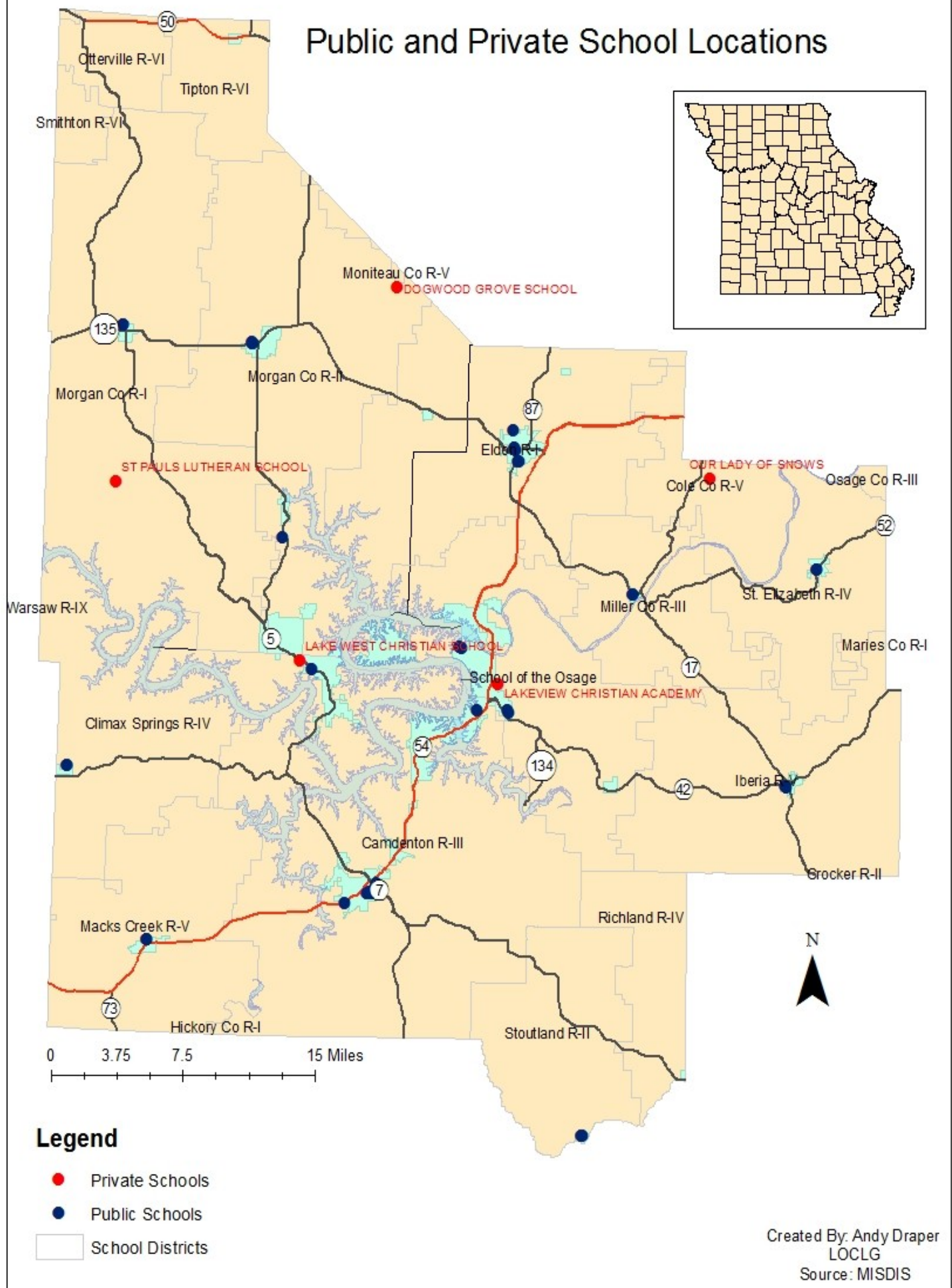
County Public, Private, College, University Schools 2014

Morgan County Schools	Student #	Public	Private	College/ University	Other/ Alternative
Dogwood Grove	26		X		
Morgan Co. R-II Elementary	642	X			
Morgan Co. R-II High	452	X			
Morgan Co. R-II Middle 306		X			
Morgan Co. R-II South Elementary	56	X			
Morgan Co. R-I Elementary	343	X			
Morgan Co. R-I High	270	X			
St. Paul Lutheran	36		X		



Source: http://www.publicschoolreview.com/county_schools/stateid/MO/county/29141
<http://mc.ds.dese.mo.gov/guided inquiry/Pages/District-and-School-Information.aspx>

Public and Private School Locations



Education Data

County Education Statistics 2014

Camden County Districts	Graduation Rate	Dropout Rate	Students/to classroom Teachers	# of Students	# of Teachers and certified Staff
Camdenton R-III	94.96%	1.7%	18	4,275	400
Climax Springs R-IV	100%	2.3%	11	235	33
Macks Creek R-V	100%	0%	13	362	47
Stoutland R-II	85.29%	0%	16	505	47
Miller County Districts					
Eldon R-I	87.34%	0.5%	18	1,956	186
Miller Co. R-III	100%	0%	13	226	43
St. Elizabeth R-IV	100%	0%	14	238	41
School of the Osage R-II	96.55%	0%	18	1,892	178
Iberia R-V	89.66%	4.2%	16	742	68
Morgan County Districts					
Morgan Co. R-I	96.97%	0%	19	642	60
Morgan Co. R-II	97.37%	0.4%	18	1,456	141

Source: <http://mcds.dese.mo.gov/guided inquiry/Pages/District-and-School-Information.aspx>



Photo: Morgan County R-II School District

Education Data

County Educational Attainment (2013 ACS 5 yr.)

	Camden	Miller	Morgan
Population 18-24 years	2858	1867	1482
< than High School Graduate	21.2	25.8	33.4
High School Graduate (includes equivalency)	36.7	40.7	42.8
Some College/Assoc. De- gree	34.0	29.4	23.8
Bachelor's Degree >	8.0	4.2	0.0
Population 25 years >	32644	16,938	1453
Less than 9th Grade	3.7	4.9	8.9
9-12 Grade (no diploma)	7.0	10.4	11.9
High School Graduate (includes equivalency)	36.0	41.6	4.7
Some College (no degree)	25.0	23.9	19.3
Associate's Degree	7.6	4.8	5.4
Bachelor's Degree	12.8	9.8	9.2
Graduate/Professional Degree	8.0	4.7	3.5

Source: <http://factfinder2.census.gov/faces/nav/jsf/pages/index.xhtml>



Missouri Tax Information

State of Missouri Tax Rates

Corporate Tax Rate: 6.25%

Personal Income Tax Rate: 1.5 - 5.5% on income \$9,000 <; 6% on income >\$9,000

County Tax Rates

County Real Estate Taxes

	Camden	Miller	Morgan
Commercial: % of Appraised Value	32	32	32
Residential: % of Appraised Value	19	19	19
Agriculture: % of Appraised Value	12	12	12

County Personal Property Taxes

	Camden	Miller	Morgan
Personal Property: % on \$100 Appraised Value	33 1/3	33 1/3	33 1/3
Farm Machinery: % on \$100 Appraised Value	12	12	12

County Sales Taxes

Camden (Includes Cma-MO Ambulance Dist)		Miller (Includes Miller Co Ambulance Dist.)		Morgan (Includes Cma-MO Ambulance Dist.)	
Unincorporated Rate: 5.975%		Unincorporated Rate: 5.725%		Unincorporated Rate: 5.725%	
Incorporated Rate		Incorporated Rate		Incorporated Rate	
Camdenton	7.475%	Eldon	8.125%	Gravois Mills	7.225%
Climax Springs	5.975%	Iberia	7.725%	Laurie	7.725%
Lake Ozark**	7.975%	Kaiser	5.725%	Rocky Mount	5.725%
Linn Creek	8.725%	Lake Ozark**	7.975%	Stover	7.225%
Montreal	5.475%	Osage Beach	7.725%	Sunrise Beach	7.725%
Osage Beach**	7.475%	Tuscumbia	6.725%	Syracuse	5.725%
Stoutland	6.475%	St. Elizabeth	6.725%	Versailles	7.725%
Sunrise Beach**	7.975%				
Village of Four Seasons**	6.975%				

Missouri Tax Information

Local Sales Tax Receipts

(In dollars)

City	2011	2012	2013	2014
Camdenton	140,106,717	144,628,117	148,054,280	151,095,525
Eldon	85,383,318	82,931,772	86,120,466	85,900,121
Lake Ozark	54,600,931	86,792,893	95,879,469	137,122,062
Osage Beach	442,456,889	449,384,817	455,089,892	468,246,096
Versailles	55,126,629	58,629,524	60,376,116	62,449,024

City	2007	2008	2009	2010
Camdenton	143,250,101	142,873,355	140,199,707	137,501,929
Eldon	85,146,985	87,128,709	82,603,191	83,866,052
Lake Ozark	63,043,338	57,751,337	51,847,572	52,134,700
Osage Beach	486,497,788	458,992,271	438,065,306	435,620,458
Versailles	59,050,783	59,164,387	55,536,898	55,090,741



Camden, Miller, Morgan County Data

County Classifications/Assessments 2014

	Camden	Miller	Morgan
County Seat	Camdenton 65020	Tuscumbia 65082	Versailles 65084
Classification	First Class	Third Class	Third Class
Assessed Valuation	\$1,539,924,439	\$396,818,345	\$468,209,117
Square Miles	641	593	594

Source: http://www.sos.mo.gov/BlueBook/2009-2010/8_CityCounty.pdf#search=%22County Classification 2010%22

Sales Tax Per County, April 2015 (outside city limits)*

Camden** 5.475%	Miller 5.225%	Morgan 4.725%
W/Ambulance District** 5.975%	W/Ambulance District 5.725%	W/Ambulance District 5.725%

Sales Tax Per County, April 2015 (inside city limits)*

Camden		Miller		Morgan	
Camdenton	7.475%	Bagnell	6.225%	Gravois Mills	7.225%
Climax Springs	5.975%	Brumley	6.725%	Laurie	7.725%
Lake Ozark**	7.975%	Eldon	8.125%	Stover	7.225%
Laurie	7.725%	Iberia	7.725%	Sunrise Beach	7.725%
Linn Creek	8.725%	Lake Ozark**	7.975%	Versailles	7.725%
Osage Beach**	7.475%	Osage Beach	7.725%		
Richland	8.475%	St. Elizabeth	6.725%		
Stoutland	6.475%	Tuscumbia	6.725%		
Sunrise Beach**	7.975%				
Village of Four Seasons**	6.975%				
Lake Ozark	8.225%				

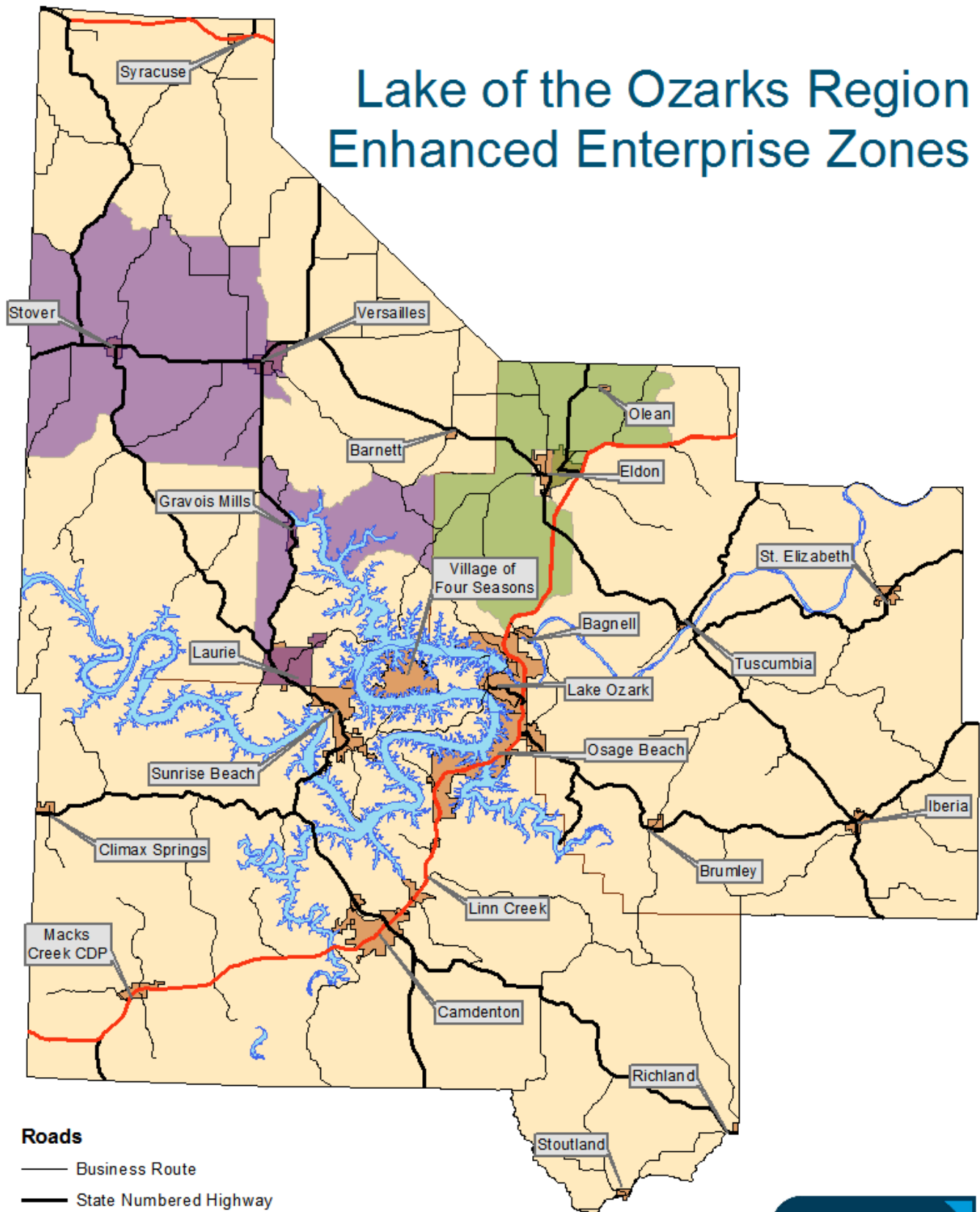


Source: <http://dor.mo.gov/pdf/localsales.pdf>, <http://dor.mo.gov/pdf/rates/2015/apr2015.pdf>

*Includes State tax rate of 4.225%

** Higher rates within various CIDs and TDDs

Lake of the Ozarks Region Enhanced Enterprise Zones



Roads

- Business Route
- State Numbered Highway
- State Lettered Highway
- US Highway

Enhanced Enterprise Zones

- Miller County EEZ
- Morgan County EEZ

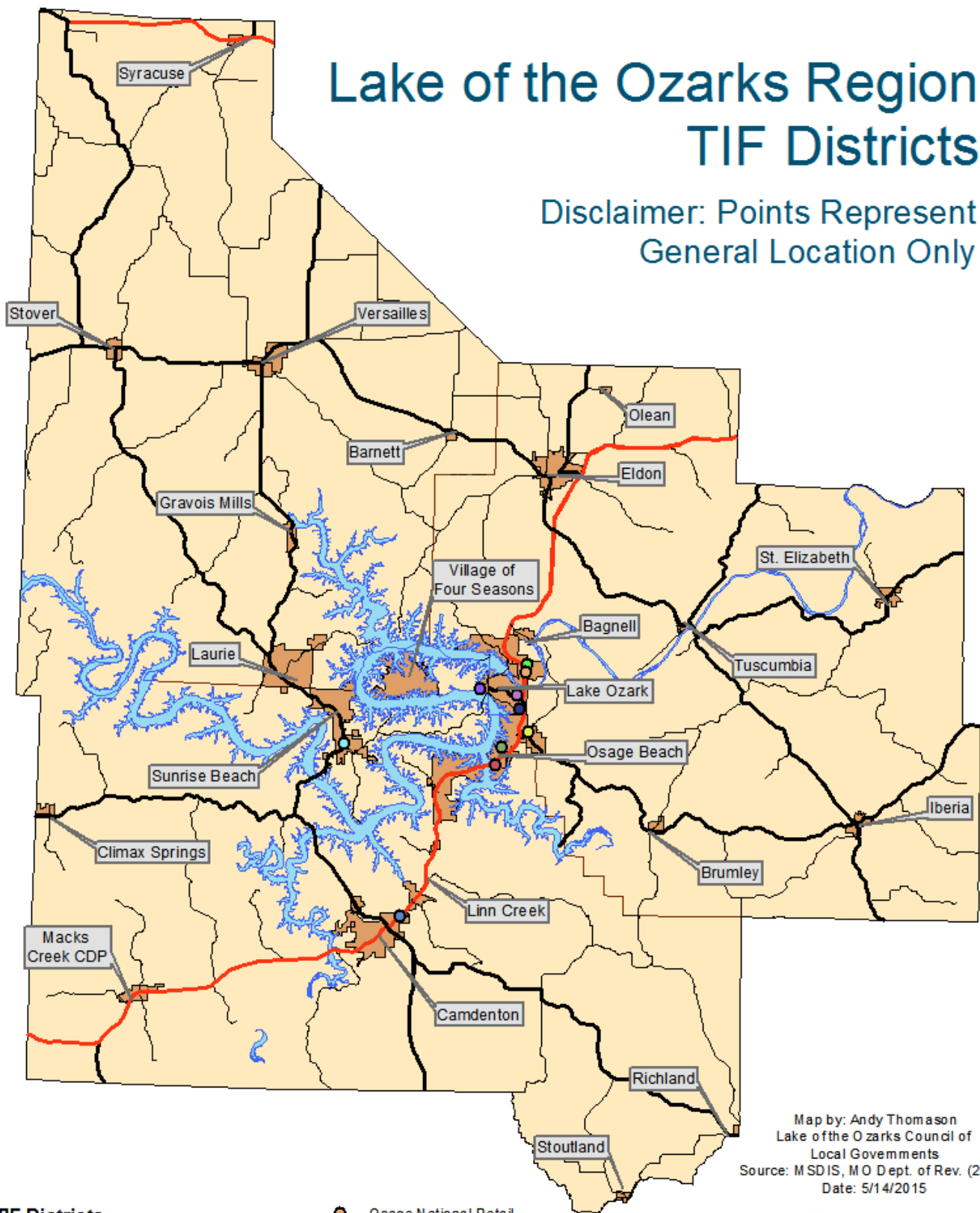
Map by: Andy Thomason
Lake of the Ozarks Council of
Local Governments
Source: MSDIS
Date: 5/12/2015



Lake of the Ozarks
Regional Economic Development Council
Quality Life. Quality Business.

Lake of the Ozarks Region TIF Districts

Disclaimer: Points Represent
General Location Only



TIF Districts

- Dierbergs Osage Beach Redevelopment
- Horseshoe Bend
- Marina View Redevelopment
- Oak Ridge Landing
- Osage National
- Osage National Retail
- Prewitt's Highway 54 Enterprises
- Sunrise Beach Market Center
- The Briscoe's
- US Highway 54 and Business US Highway 54

Map by: Andy Thomason
Lake of the Ozarks Council of
Local Governments
Source: MSDIS, MO Dept. of Rev. (2013)
Date: 5/14/2015



Lake of the Ozarks
Regional Economic Development Council
Quality Life. Quality Business.

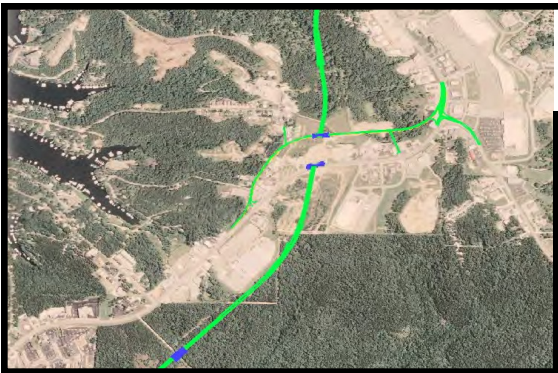
Transportation Data

County Transportation

County Major Roadways

Camden	Miller	Morgan
US 54 Route 5 Route 7	US 54 Route 17 Route 42 Route 52 Route 87 Route 242	US 50 Route 5 Route 52 Route 135

Source: <http://www.modot.org/newsandinfo/CountyMaps.htm>

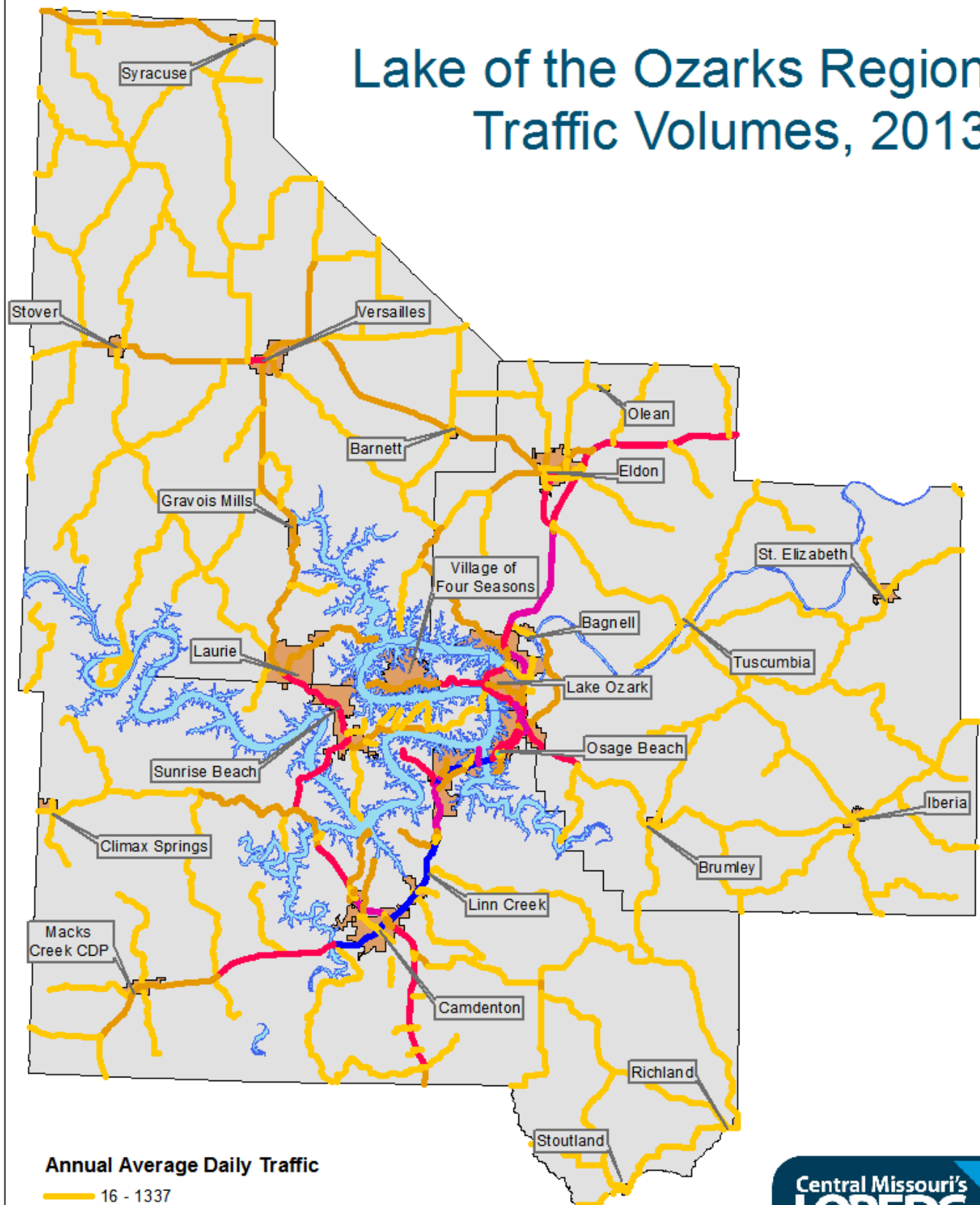


County Traffic Count 2013

County	Intersection/Location	Traffic Count
Camden/Miller (Osage Beach/Lake Ozark area)	54/KK, north of intersection	US 54 8,538,445 (Daily Avg. 23,393)
Camden (Linn Creek area)	54/V Intersection	US 54 9,462,990 (Daily Avg. 25,926)
Miller (Eldon area)	54/Business 54, east of Eldon	US 54 5,554,800 (Daily Avg. 15,430)
Morgan (Versailles area)	52/5 Intersection	MO 52/5 4,380,730 (Daily Avg. 12,002)
Morgan (Laurie area)	5/TT/F Intersection	MO 5 3,527,360 (Daily Avg. 9,664) TT/F 2,018,815 (Daily Avg. 5,531)

Source: http://www.modot.org/safety/documents/2011_Traffic_CD-District.pdf

Lake of the Ozarks Region Traffic Volumes, 2013



Annual Average Daily Traffic

- 16 - 1337
- 1338 - 3738
- 3739 - 7403
- 7404 - 11870
- 11871 - 16629

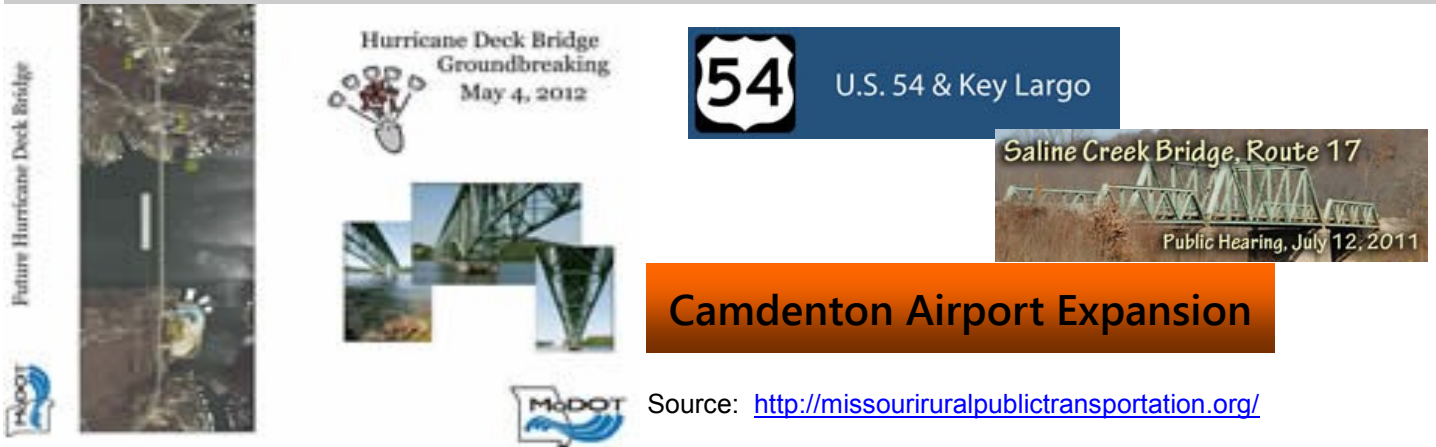
Map by: Andy Thomason
Lake of the Ozarks Council of
Local Governments
Source: M SDIS, MoDOT
Date: 4/13/2015



Lake of the Ozarks
Regional Economic Development Council
Quality Life. Quality Business.

Transportation Data

County Transportation Projects in Progress 2013



Missouri Transportation Services

Transportation - Major Airport/Airlines

Branson Airport (BKG)
Hollister, MO 65672

Columbia Regional Airport (COU)
Columbia, MO 65201

Kansas City International Airport (MCI)
Kansas City, MO 64153

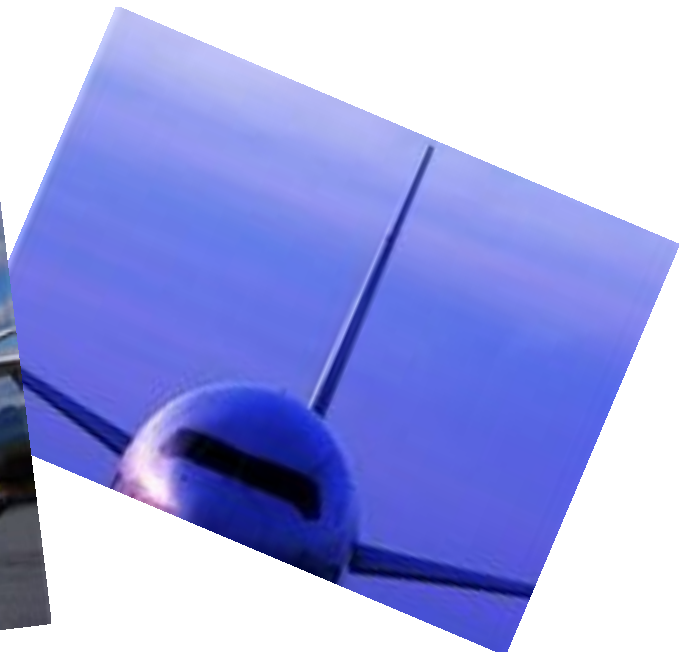
Springfield-Branson National Airport (SGF)
Springfield, MO 65802

Cape Girardeau Regional Airport (CGI)
Cape Girardeau, MO 63701

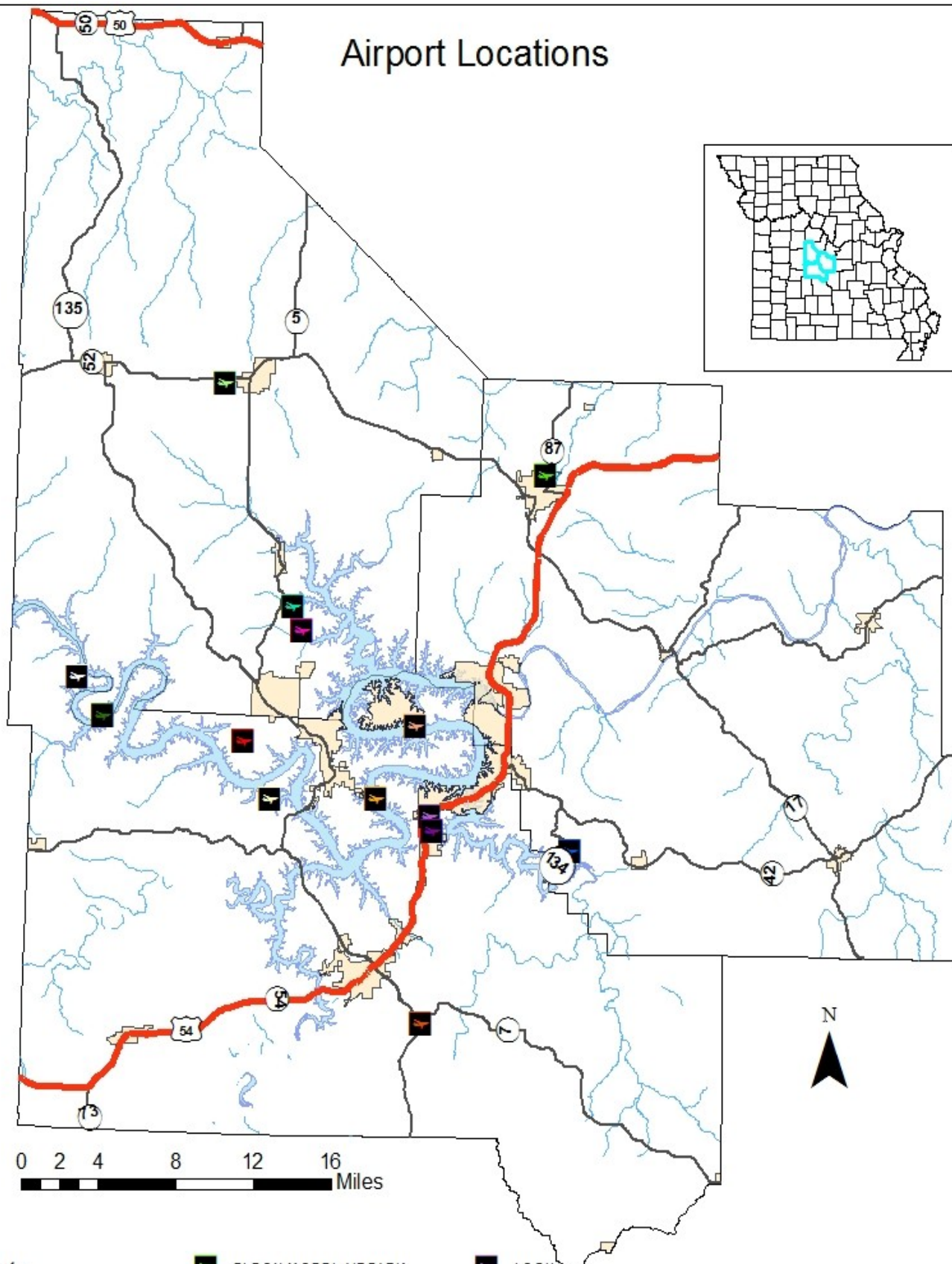
Joplin Regional Airport (JLN)
Joplin, MO 64801

Lambert-St. Louis International Airport (STL)
St. Louis, MO 63145

Waynesville Regional Airport (TBN)
Ft. Leonard Wood, MO 65473



Airport Locations



Airports

	BAR-VIK		ELDON MODEL AIRPARK		LOGH
	CAMDENTON MEMORIAL		GRAND GLAIZE- OSAGE BEACH		MISTWOOD
	EAGLE'S LANDING		HARBOUR		ROY OTTEN MEMORIAL AIRFIELD
	EAGLE'S ROOST		IVY BEND		SHERLOCK FIELD
			LEE C FINE MEMORIAL		TAN TARA RESORT

Created By: Andy Draper
LOCLG
Source: MISDIS

Transportation Data

County Area Transportation - Local/Regional Airports/Airlines (within 100 miles)

City/Location	Airport/Airline	Code
Bolivar	Bolivar Municipal	M17
Boonville	Jesse Viertel Memorial	VER
Buffalo	Buffalo Municipal	H17
Camdenton	Camdenton Memorial	OZS
Dearborn	Triple R	OC1
Eldon	Eldon Model Airpark	H79
Fulton	Elton Hensley Memorial	FTT
Jefferson City	Jefferson City Memorial	JEF
Kaiser/Lake Ozark	Lee C Fine Memorial	AIZ
Lebanon	Floyd W Jones	LBO
Linn	Linn State Technical College	1H3
Mansfield	Mansfield Municipal	O3B
Mexico	Mexico Municipal	MYJ
Osage Beach	Grand Glaize	K15
Osceola	Osceola Municipal	3MO
Richland	Richland Municipal	MO1
Rolla	Rolla Downtown	K07
Rolla/Vichy	Rolla National	VIH
Sedalia	Sedalia Memorial	DMO
Seymour	Owen Field	H58
Springfield	Springfield Downtown	3DW
Springfield	Flying Bar H	MO2
Stockton	Stockton Municipal	MO3
Versailles	Roy Otten Memorial	3VS
Warsaw	Warsaw Municipal	RAW
Waynesville	Waynesville St. Robert Regional	TBN

Source: <http://www.modot.org/othertransportation/aviation/airportdirectorylist.htm>

Transportation Data

Missouri Transportation - Railroads/Railways

19 Railroads

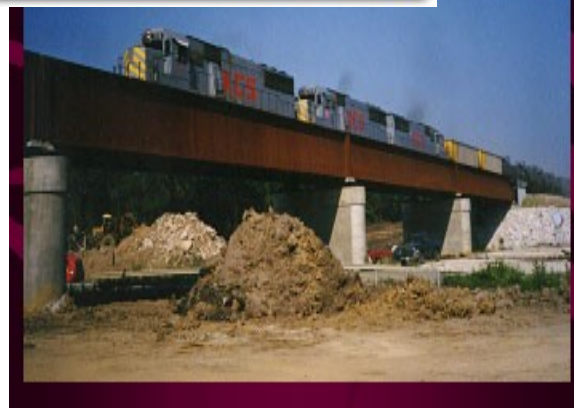
State of Missouri

Classifications

Class I	National Railroads
Regionals	Two/Three States
Terminals	Metropolitan Areas
Shortlines	Regional inside stateliness
Tourists	Short Trip/Passengers
Amtrak	National Inter-City Passenger



Source: <http://missouriruralpublictransportation.org/othertransportation/rail/freight.htm>



Code	Railroad/Railway
AM	Arkansas & Missouri Railroad
BGKX	Belton-Grandview Railway
BSR	Branson Scenic Railway
BNSF	BNSF Railway
CMR	Central Midland Railway
CBRM	Chillicothe-Brunswick/MO North Central
COLT	Columbia Terminal Railroad
DM&E	Dakota, Minnesota & Eastern Railroad
KCS	Kansas City Southern Railway
KCT	Kansas City Terminal Railway
MRS	Manufacturers' Railway
MNA	Missouri & Northern Arkansas Railroad
MVP	Missouri Valley Park Switching
NS	Norfolk Southern Railway
SLIM	St. Louis Iron Mountain Railroad
SE	SEMO Port Railroad
TRRA	Terminal Railroad Assoc. of St. Louis
UP	Union Pacific Railroad

Amtrak Terminals

Hermann, MO
Independence, MO
Jefferson City, MO
Kansas City, MO
Kirkwood, MO
La Plata, MO
Lee's Summit, MO
Poplar Bluff, MO
Sedalia, MO
St. Louis, MO
Warrensburg, MO
Washington, MO

Source: <http://www.amtrak.com/midwest-train-bus-stations>

Missouri Railroad Connections

Missouri Railroad Connections

This map displays the extensive railroad network across Missouri, with lines connecting major hubs and passing through numerous counties. The map includes a scale bar (0 to 120 miles) and a compass rose. An inset image shows a yellow and black locomotive. A legend identifies railroads and counties. A separate map shows current passenger rail service from Kansas City to St. Louis.

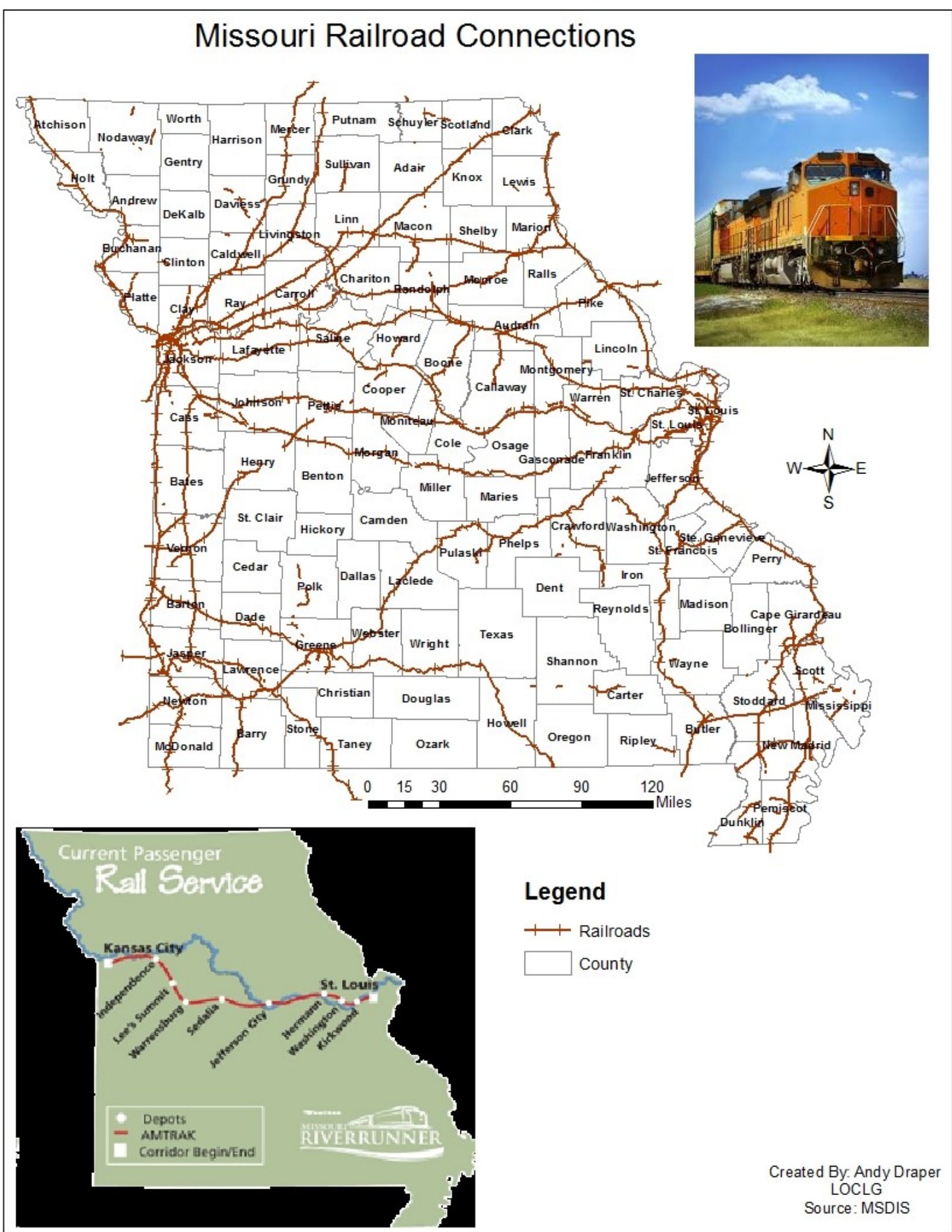
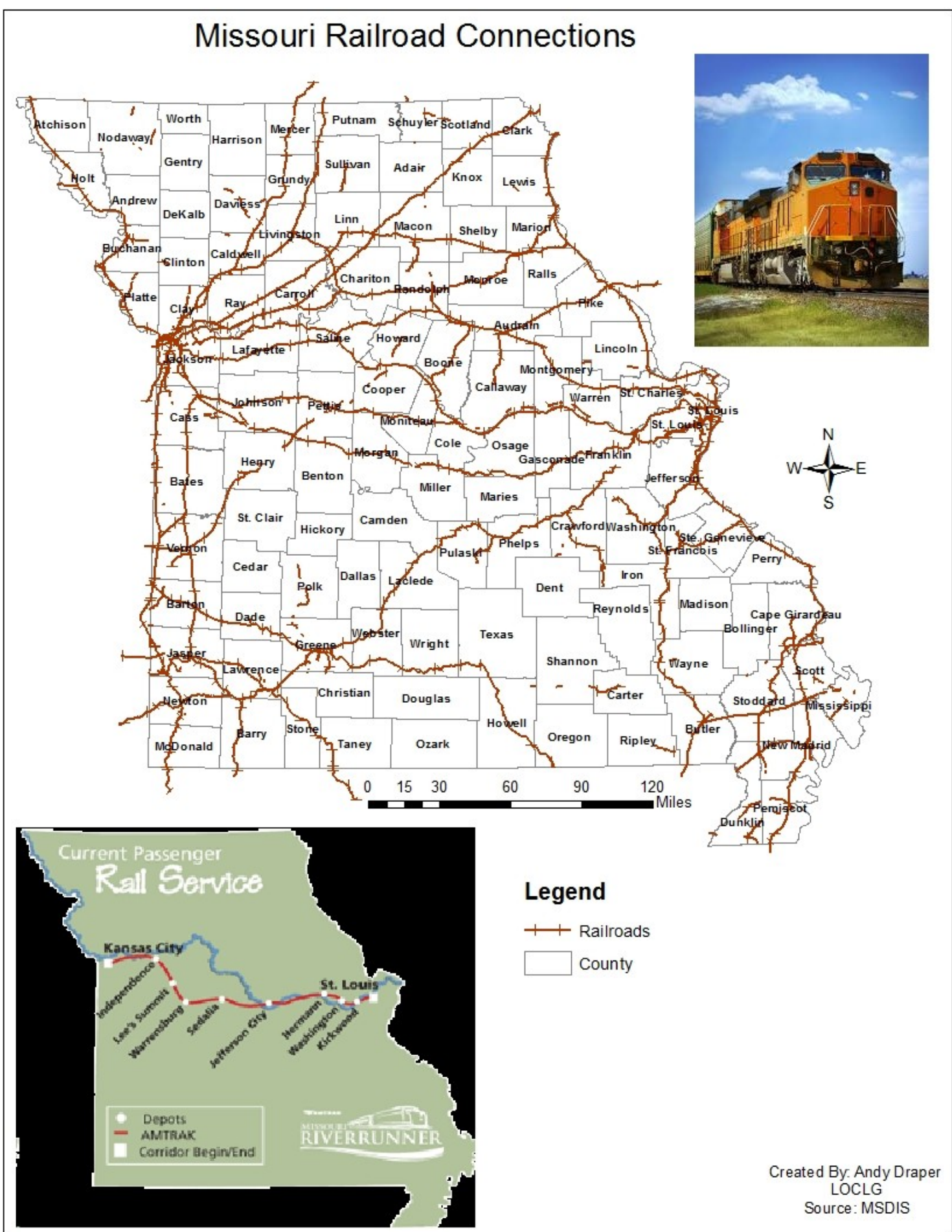
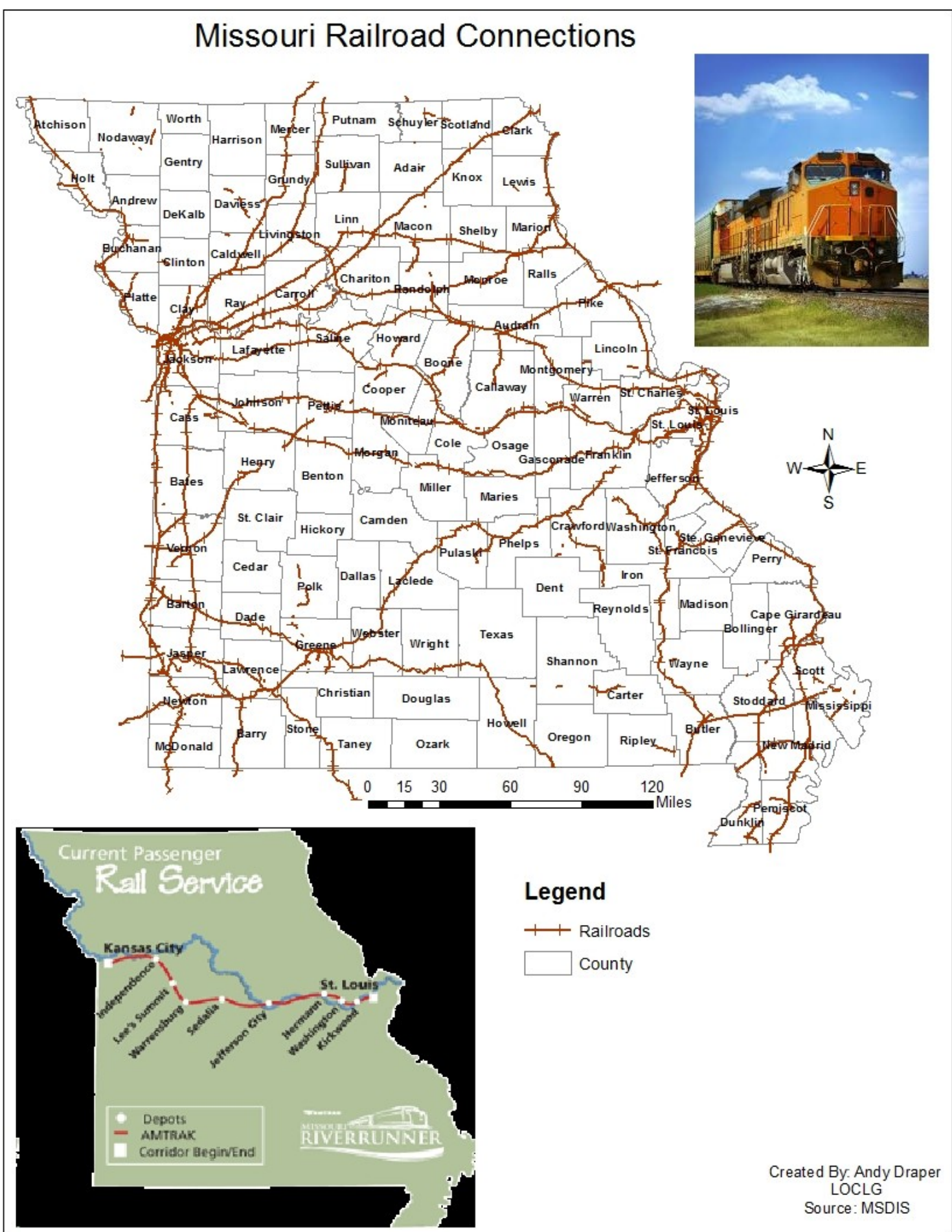
Legend

- +— Railroads
- County

Current Passenger Rail Service

The inset map shows the current passenger rail service route from Kansas City to St. Louis. The route includes stops at Independence, Lee's Summit, Warrentonburg, Sedalia, Jefferson City, Hermann, Washington, and Kirkwood. The route is marked with a red line and dots indicating depots. The route is labeled "AMTRAK" and "Corridor (Begin/End)".

Created By: Andy Draper
LOCLG
Source: MSDIS



Missouri Railroad Connections

Missouri Railroad Connections

Current Passenger Rail Service

Kansas City

St. Louis

Depots

AMTRAK

Corridor Begin/End

Legend

—+— Railroads

□ County

Created By: Andy Draper
LOCLG
Source: MSDIS

- # Missouri Railroad Connections
-
- Missouri Railroad Connections**
- This map displays the extensive railroad network across Missouri, with lines connecting major hubs and passing through numerous counties. The map includes a scale bar (0 to 120 miles) and a compass rose. An inset image shows a yellow and black locomotive. A legend identifies railroads and counties. A separate map shows current passenger rail service from Kansas City to St. Louis.
- Legend**
- +— Railroads
 - County
- Current Passenger Rail Service**
- Kansas City to St. Louis
- Depots: Independence, Lee's Summit, Warrensburg, Sedalia, Jefferson City, Hermann, Washington, Kirkwood
- AMTRAK
- Corridor (Begin/End)
- RIVERRUNNER**
- Created By: Andy Draper
LOCLG
Source: MSDIS

Missouri Railroad Connections

This map illustrates the extensive railroad network across Missouri, with lines connecting various counties. Major cities like St. Louis, Kansas City, and Springfield are marked as key hubs. The map also shows county boundaries and includes a scale bar (0 to 120 miles) and a compass rose. An inset image shows a yellow and black locomotive.

Current Passenger Rail Service

The map highlights the current passenger rail service, showing the route from Kansas City to St. Louis. Key stops include Independence, Lee's Summit, Warrenton, Sedalia, Jefferson City, Hermann, Washington, and Kirkwood. The route is marked with a red line, and the service is identified as AMTRAK RIVERRUNNER.

Legend

- +— Railroads
- County

Created By: Andy Draper
LOCLG
Source: MSDIS

Transportation Data

Missouri Transportation - Bus /Taxi Transportation

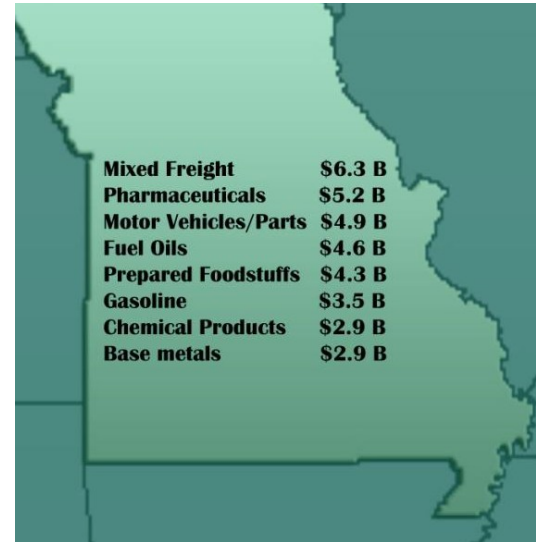
Busline/Taxi	Location
Buddy's Transportation	Lake Ozark
Prompt Charters & Tours	Lake Ozark
Greyhound	Lebanon St. Robert
D&K Bus	Jefferson City
Missouri Public Transit	Jefferson City
Jefftran	Jefferson City
Lebanon Bus Station	Lebanon
Oats	Columbia
Maxi Taxi	Kaiser
365-Cabs	Lake Ozark Area
Lake Ozark Casual Cab	Lake Ozark Area
Mr. Taxi	Kaiser
All American Cab Co.	Osage Beach
Yellow Cab	St. Robert



Logistics Data

County Area Transportation - Major Freight Carriers

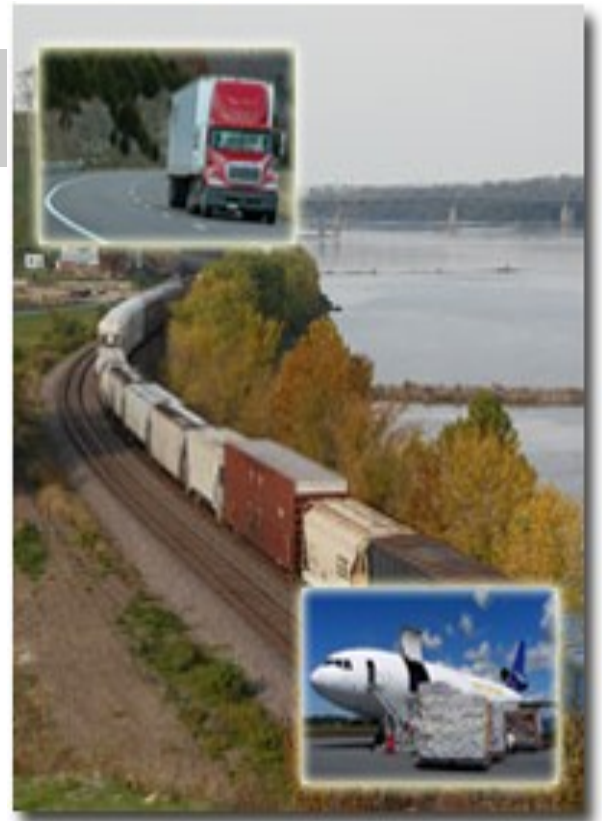
Carrier	Location
UPS	Lake Ozark Camdenton
FedEx	Osage Beach
DHL	Serving Lake Area
Ryder System	Serving Lake Area
Penske	Serving Lake Area
JB Hunt	Serving Lake Area
Swift Transportation	Serving Lake Area
Landstar System	Serving Lake Area
Werner	Serving Lake Area
Pacer International	Serving Lake Area
US Xpress	Serving Lake Area
Old Dominion	Serving Lake Area
Saia	Serving Lake Area



Source: http://www.missourieconomy.org/pdfs/trucking_freight.pdf

County Area Transportation - Local/Regional Freight Carriers

Carrier	Location
Top Gun Transportation	Osage Beach
Legend Transport	Osage Beach
Tts	Sunrise Beach
JMD Transportation	Sunrise Beach
Eldon Freightways	Eldon
Derringer Freight	Sunrise Beach
Sureway Transportation	Edwards
Online Freight	Warsaw
Absolute Freight Solutions	Versailles
Platinum Express	Warsaw
Bisges Trucking	Jefferson City
Yellow Freight System	Camdenton
Opies Trucking	Eldon
Elegant Transport	Camdenton
Central Area Transportation	Jefferson City
Show-Me Medical Transportation	Versailles
Kehr Trucking	Russelville
Katschman Trucking	California

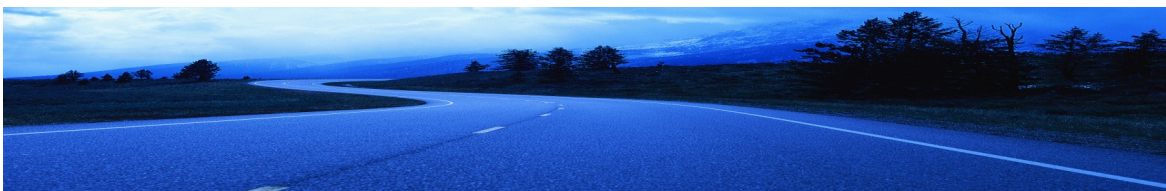


Logistics Data

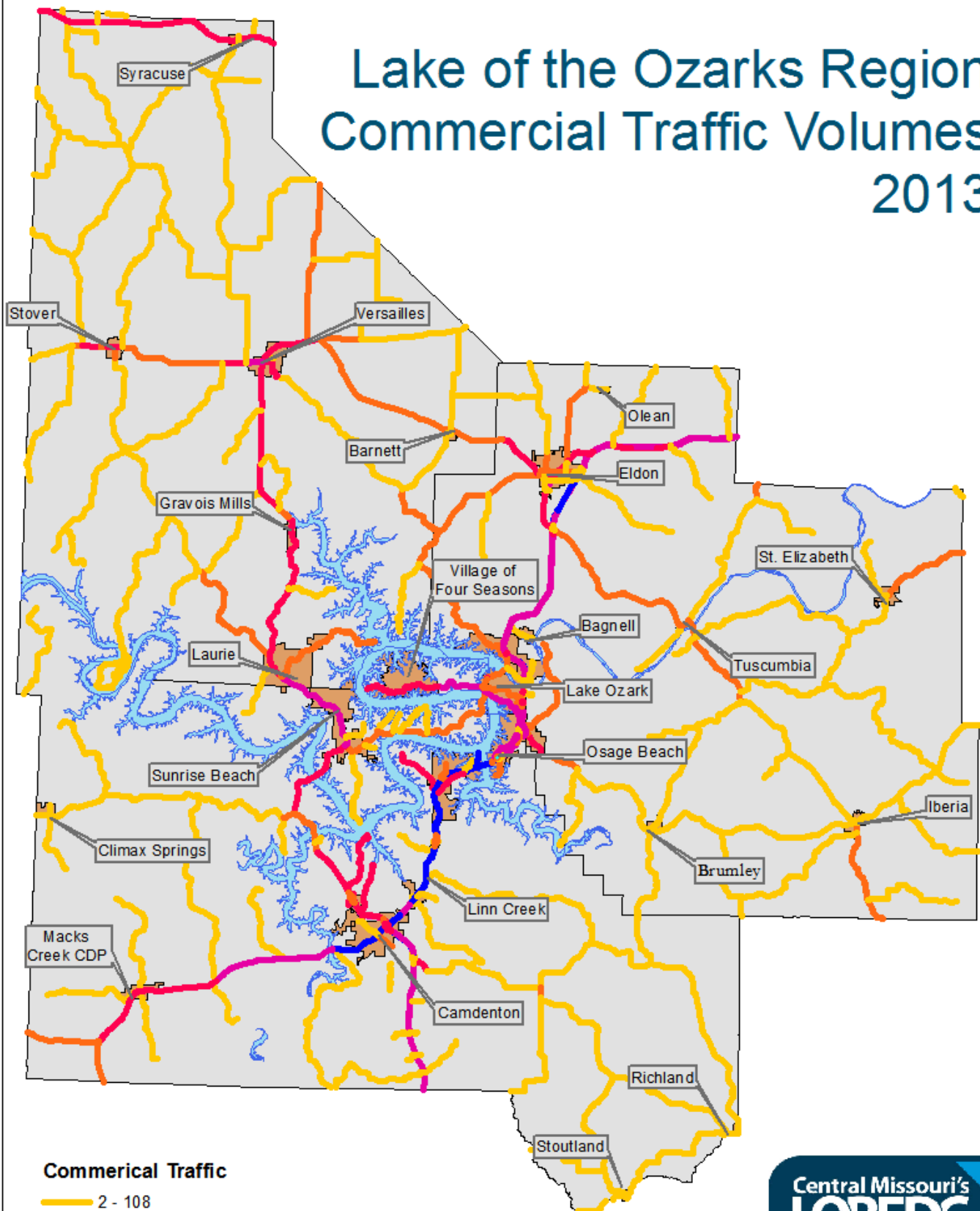


County Area Transportation - Local/Regional Freight Carriers

Carrier	Location
Iron Highway Transportation	Serving Lake Area
Action Transport	Serving Lake Area
ZP Trucking	Serving Lake Area
Posey Auto Transporters	Serving Lake Area
RoadRunner Auto Transport	Serving Lake Area
Freight Xperts	Serving Lake Area
American Freight	Serving Lake Area
Navis Pack & Ship	Serving Lake Area
Suncoast Auto Transport	Serving Lake Area
AAA Anytime	Serving Lake Area
Prompt Charters/Tours	Serving Lake Area
Albors & Associates	Serving Lake Area
Bus Quote USA	Serving Lake Area
Buddy's Transportation	Serving Lake Area
UHaul	Serving Lake Area



Lake of the Ozarks Region Commercial Traffic Volumes 2013



Commerical Traffic

- 2 - 108
- 109 - 229
- 230 - 482
- 483 - 1077
- 1078 - 2175

Map by: Andy Thomason
Lake of the Ozarks Council of
Local Governments
Source: M SDIS, MoDOT
Date: 4/13/2015



Lake of the Ozarks
Regional Economic Development Council
Quality Life. Quality Business.

Utilities

County Area Utilities - Electric & Natural Gas



County Area Electric

Company	Location
Ameren Missouri	Eldon Lake Ozark Linn Creek Osage Beach Versailles
Co-Mo Electric Cooperative	Gravois Mills Laurie Sunrise Beach
Gascosage Electric Co-Op	Iberia
Laclede Electric Co-Op	Camdenton
Three Rivers Electric Co-Op	Eldon
Show Me Power Corp	Richland
Southwest Electric Co-Op	Roach

County Area Natural Gas

Ameren Natural Gas	Miller and Morgan Counties
Summit Natural Gas	Camden, Miller, Morgan Counties



Utilities

County Area Utilities - Public Water & Wastewater

County Area Water

Company	Location
Public Water Supply Dist.2	Camdenton
Public Water Supply Dist 1	Macks Creek
Crocker Public Water Supply	Crocker
Public Water Supply	Camdenton
Ozark Shores Water	Lake Ozark
American Water Works	Eldon
Lake Region Water & Sewer	Sunrise Beach
Laclede Co. Water Dist	Stoutland

County Public Water Districts

Camden County

Public Water District I
Public Water District II
Public Water District III
Public Water District IV
Public Water District V

City Water Systems

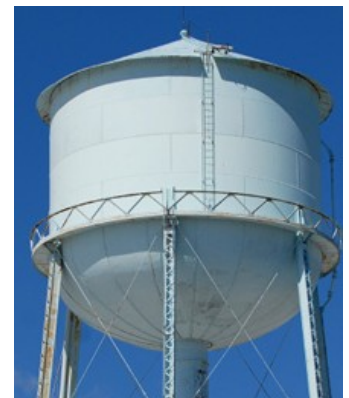
City	County
Barnett	Morgan
Camdenton	Camden
Eldon	Miller
Iberia	Miller
Lake Ozark	Miller, Camden
Laurie	Morgan
Linn Creek	Camden
Osage Beach (East)	Camden
Osage Beach (West)	Camden
St. Elizabeth	Miller
Stover	Morgan
Sunrise Beach	Camden
Versailles	Morgan

Municipal Wastewater Systems

City	County	Design MGD
Barnett	Morgan	0.022
Camdenton	Camden	0.640
Eldon	Miller	1.000
Iberia	Miller	0.150
Lake Ozark/ Osage Beach	Miller, Camden	3.000
Laurie	Morgan	0.250
Linn Creek	Camden	0.046
St. Elizabeth	Miller	0.036
Stover	Morgan	0.073 0.120
Sunrise Beach	Camden	0.050
Versailles	Morgan	0.550



Photo: Osage Beach/Lake Ozark Joint Sewer Plant



Source: <http://www.dnr.mo.gov/env/wpp/pdwb/2013-census.pdf>

Broadband/Internet Data

Lake Area Service Providers Provider DBA Name

AT&T Communications of Texas Inc.

AT&T Mobility LLC

CableAmerica

Cellco Partnership

CenturyTel Inc.

Charter Communications

Co-Mo Comm Inc.

Deutsche Telekom AG

Fidelity Communications Company

Hughes Communications Inc.

Imagination Inc.

Otelco Inc.

Radio Wire Inc.

Skycasters

Sprint Nextel Corporation

StarBand Communications Inc.

The Stoutland Telephone Company

Total Highspeed Internet Service

United States Cellular Corporation

ViaSat Inc.

Video Direct Satellite & Entertainment

Windstream Corporation

Wireless Investments LLC

YHTI Inc.

AT&T Southwest

AT&T Mobility LLC

Cable America Missouri LLC

Verizon Wireless

CenturyLink

Charter Communications

Co-Mo Connect

T-Mobile

Fidelity Cablevision Inc.

Hughes Network Systems LLC

Iland Internet Services LLC

Otelco Mid-Missouri LLC

Radio Wire Inc.

Skycasters

Sprint

StarBand Communications Inc.

TDS Telecom

Total Highspeed Internet Service

U.S. Cellular

WildBlue Communications Inc.

Video Direct

Windstream Corporation

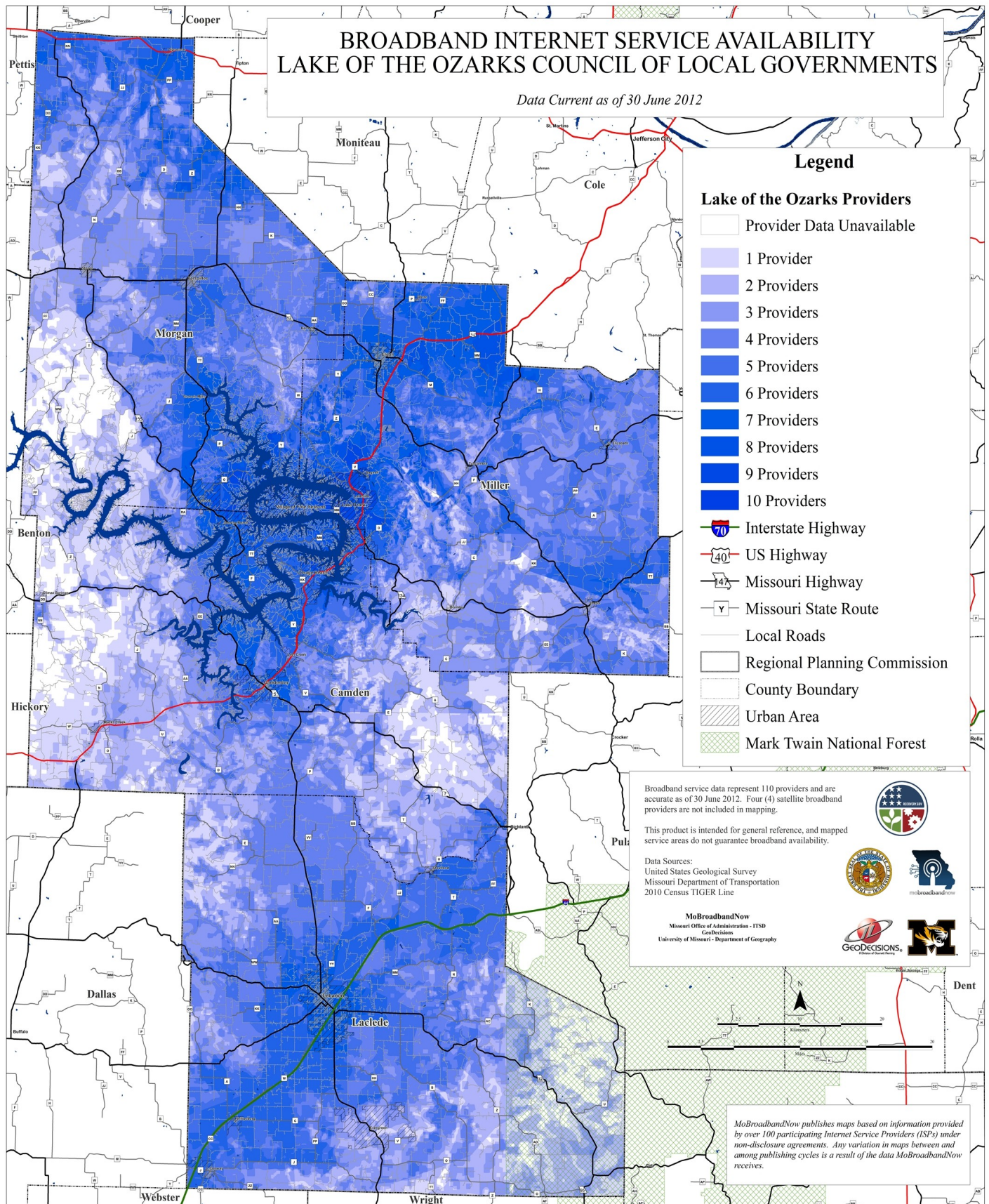
Easy Net

YHTI

Source: <http://www.locig.org/reportsstudies.htm>



Broadband/Internet Data



Communications Data

County Communications Television Stations



County Media - Television/Cable

Station	Location
KMIZ (Channel 2) ABC	Columbia
KYTV (Channel 3) NBC	Springfield
KMOS (Channel 6) PBS	Warrensburg
KOMU (Channel 7/8) NBC	Columbia
KSPR (Channel 8) ABC	Springfield
KOLR (Channel 10) CBS	Springfield
KFSX (Channel 11) FOX	Springfield
KRCG (Channel 13) CBS	Jefferson City
Video Productions (Channel 32) IND	Osage Beach
KRBK (Channel 49) FOX	Eldridge Lake Ozark
Lake TV 32	Osage Beach
Charter Communications	Osage Beach



Communications Data

County Communications Radio Stations



County Media - Radio

Station	Broadcast Mode	Format	Location
KBNN	750 AM	Business/News	Lebanon
KRMS	1150 AM	News/Talk	Osage Beach
KLIK (Bott)	1240 AM	News/Talk	Jefferson City
KCRL (Bott)	90.3 FM	Christian News/Info.	Gravois Mills
KCVO	91.7 FM	Christian Contemporary	Camdenton
KLOZ	92.7 FM	Adult Contemporary	Kaiser
KRMS	93.5 FM	Rock	Osage Beach
KTKS	95.1 FM	Country	Versailles
KCMQ	96.7 FM	Rock	Columbia
KJMO	97.7 FM	Classic Rock	Jefferson City
KCLR	99.3 FM	Country	Jefferson City
KZVV	101.9 FM	Light Favorites	Osage Beach
KQUL	102.7 FM	Oldies	Kaiser
KJEL	103.7 FM	Adult Contemporary	Lebanon
KTXV	106.9 FM	Top 40	Columbia
KCLQ	107.9 FM	Country	Camdenton
Zimmer Broadcast			Columbia
Bene Broadcast			Osage Beach



Communications Data

County Media - Newspaper/Magazine Publications/Online

Publication/Web

Media Type

Location

Lake Sun	Publication	Eldon, Osage Beach
Lake Today	Publication	Lake Ozark
LO Profile	Publication	Lake Ozark
Focus	Publication	Camdenton, Eldon, Osage Beach
Lake Lifestyles	Publication	Camdenton, Eldon, Osage Beach
Lake of the Ozarks Official Vacation & Service Guide	Publication/Web	Camdenton, Eldon, Lake Ozark, Osage Beach
Lake of the Ozarks Restaurant Guide	Publication/Web	Camdenton, Eldon, Lake Ozark, Osage Beach
Vacation News	Publication/Web	Camdenton, Eldon, Osage Beach
Lake Media	Publication/Web	Camdenton, Eldon
Reporter	Publication	Camdenton
Weekly Standard	Publication	Camdenton, Eldon, Osage Beach
Ozark Freebee	Publication	Camdenton
TheLakeOnline	Web	Camdenton
Lakenewsonline	Web	Eldon
Westside Star	Publication	Camdenton, Eldon, Osage Beach
Lake of the Ozarks Real Estate	Publication/Web	Camdenton
Tube Tab	Publication	Camdenton, Eldon, Osage Beach
Boats	Publication	Camdenton, Eldon, Osage Beach
Advertiser	Publication	Eldon
Pennysaver	Publication	Camdenton, Eldon, Osage Beach
Shopthelake	Web	Osage Beach

Chamber of Commerce



Eldon Area Chamber of Commerce

203 East 1st Street

Eldon, MO 65020

573-392-3752

www.eldonchamber.com



Lake of the Ozarks

Camdenton Area

Chamber of Commerce

739 U.S. Highway 54

Camdenton, MO 65020

573-346-2227

www.camdentonchamber.com



Lake Area Chamber of Commerce

1 Willmore Lane

Lake Ozark, MO 65049

573-964-1008

www.lakeareachamber.com



573-374-5500

125 Oddo Dr

Sunrise Beach, MO 65079

The Lake of the Ozarks

WEST Chamber of Commerce

125 Oddo Drive

Sunrise Beach, MO 65079

573-374-5500

www.lakewestchamber.com



Versailles Area Chamber of Commerce

109 N. Monroe Versailles, MO 65084

573-378-4401 www.versailleschamber.com

Missouri Tourism



FY 2013 State Tax Revenue Due to Travel in Missouri **\$1.2 Billion**, and a total of \$2.1 billion including federal tax revenues. \$3.22 for every dollar invested in MDT's budget

FY 2013 Economic Impact of Travel **\$15.3 Billion**

FY 2013 Total Spending in tourism-related SIC codes **\$5.1 Billion**

FY 2013 Missouri Hosted More Than **39 Million Visitors**

FY 2013 Nearly **27%** of visitors come in Spring, **30%** Summer, and **26%** in Fall

FY 2013 Out-of-State Visitors **55%** In-State Visitors **45%**

FY 2013 The Number of Missourians Employed in Tourism Industry were **290,734**

FY 2013 Visiting friends and family is the most common activity for Missouri visitors, followed by shopping, sightseeing, and fine dining

Source: <http://ded.mo.gov>, www.visitmo.com

LAKE OF THE OZARKS



Convention & Visitor Bureau

Lake of the Ozarks Convention & Visitor Bureau
P.O. Box 1498 Osage Beach, MO 65065
Phone: 573-348-1599 www.funlake.com



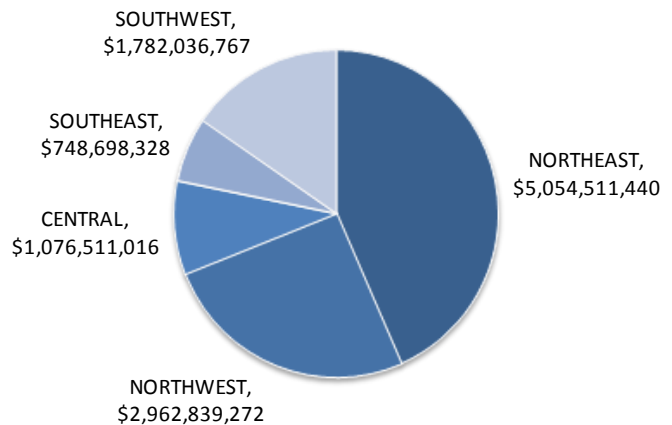
Missouri Tourism by Regions

Total Tourism Spending by Region

Of the \$11.6 Billion total tourism spending in:

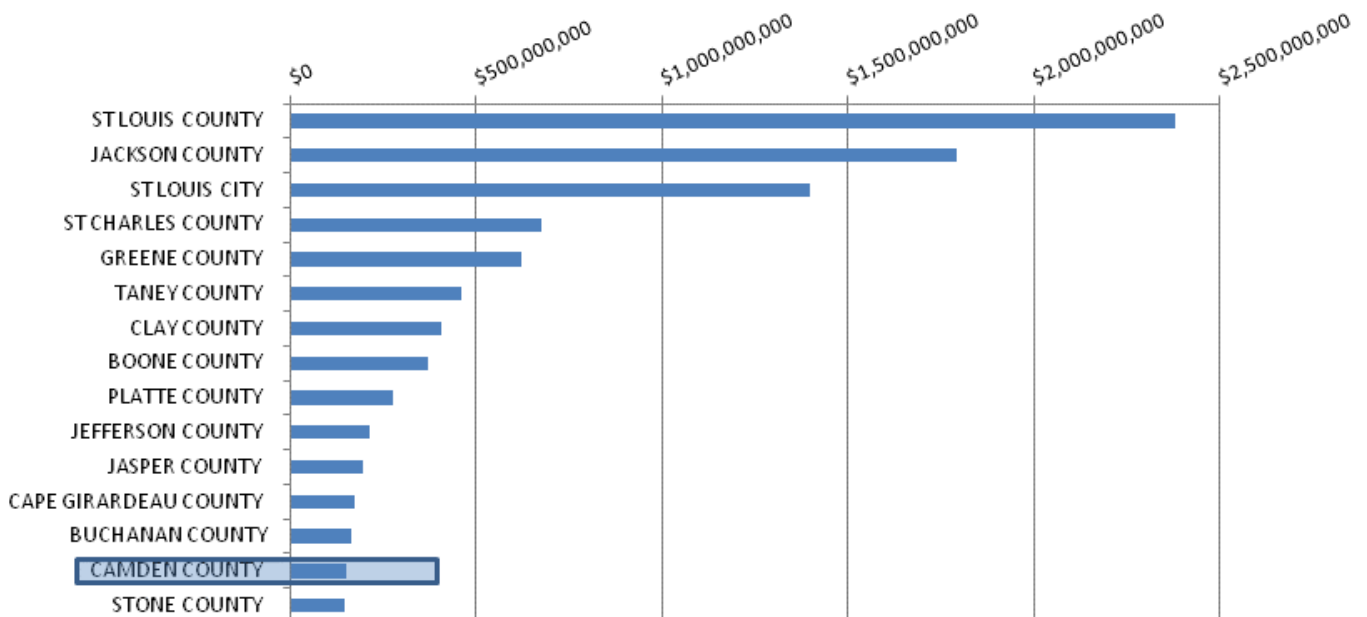
- Northeast region accounts for **\$5.1 billion** or **44%** of Missouri's tourism economy
- Northwest: **\$3.0 billion** or **26%**
- Central **\$1.1 billion** or **9%**
- Southeast **\$0.7 billion** or **6%**
- Southwest **\$1.8 billion** or **15%**

TOURISM SPENDING BY REGION, FY14



Economic Impact by Top Counties

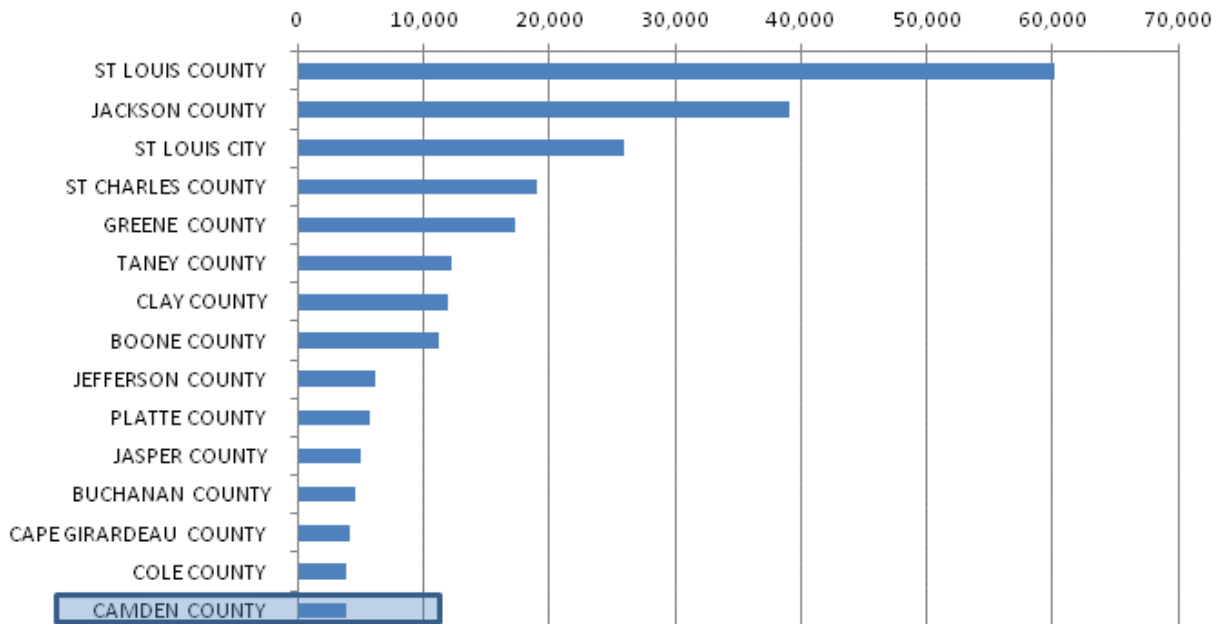
TOTAL EXPENDITURES IN 17 TOURISM-RELATED SIC CODES, FY14



Source: Missouri Division of Tourism, Annual Report FY14

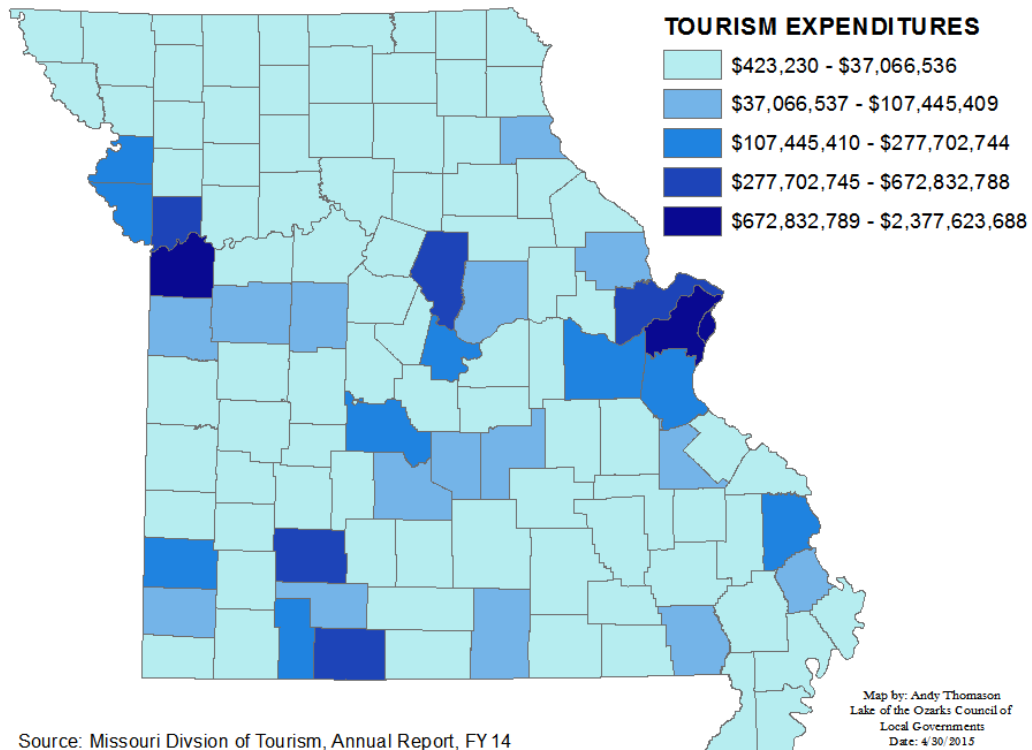
Employment in Tourism-Related Industries

TOURISM-RELATED EMPLOYMENT, FY14



Source: Missouri Division of Tourism, Annual Report FY14

TOTAL EXPENDITURES IN 17 TOURISM-RELATED SIC CODES, FY 14



Source: Missouri Division of Tourism, Annual Report, FY 14

Government

Legislative Representatives



Roy Blunt-Senator

2740-B East Sunshine
Springfield, MO 65804
417-877-7814

www.blunt.senate.gov



Claire McCaskill-Senator

324 Park Central West, Suite 101
Springfield, MO 65806
417-868-8745

www.mccaskill.senate.gov



Blaine Luetkemeyer-Congressman

3809 S. Providence Road, Suite A
Columbia, MO 65203
573-443-1041

www.luetkemeyer.house.gov



Vicky Hartzler-Congresswoman

2409 Hyde Park
Jefferson City, MO 65109
573-634-4884

www.hartzler.house.gov



Government

Legislative Representatives



Mike Kehoe-Senator
Miller/Morgan Counties
Mo Senate
201 West Capitol Avenue, Room 429
Jefferson City, MO 65101
573-751-2076
www.senate.mo.gov/kehoe



Dan Brown-Senator
Camden County
MO Senate
201 West Capitol Avenue, Room 419
Jefferson City, MO 65101
573-751-5713
<http://www.senate.mo.gov/13info/members/mem16.htm>



Mike Bernskoetter-Representative
Miller County
MO House of Representatives
201 West Capitol Avenue, Room 414
Jefferson City, MO 65101
573-751-0665
www.house.mo.gov/member.aspx?district=113&year=2012



Diane Franklin-Representative
Camden County
MO House of Representatives
201 West Capitol Avenue, Room 206B
Jefferson City, MO 65101
573-751-1119
www.house.mo.gov/member.aspx?district=155&year=2012



Rocky Miller-Representative
Camden/Miller Counties
MO House of Representatives
201 West Capitol Avenue, Room 115B
Jefferson City, MO 65101
573-751-3604
www.house.mo.gov/member.aspx?district=124



David Wood-Representative
Miller/Morgan Counties
MO House of Representatives
201 West Capitol Avenue, Room 115A
Jefferson City, MO 65101
573-751-2077
www.house.mo.gov/member.aspx?district=058



June 2015

Prepared By:
Lake of the Ozarks Council of Local Governments
P.O. Box 3553
34 Roofener Street
Camdenton, MO 65020
www.loclg.org
Phone: 573-346-5692 Fax: 573-346-9686